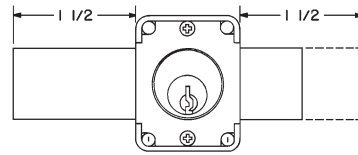
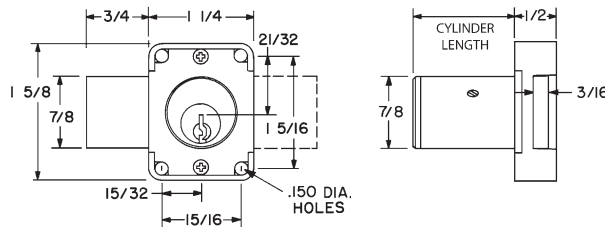


## ► 100DR | 100M Deadbolt Lock



LB: Long bolt option

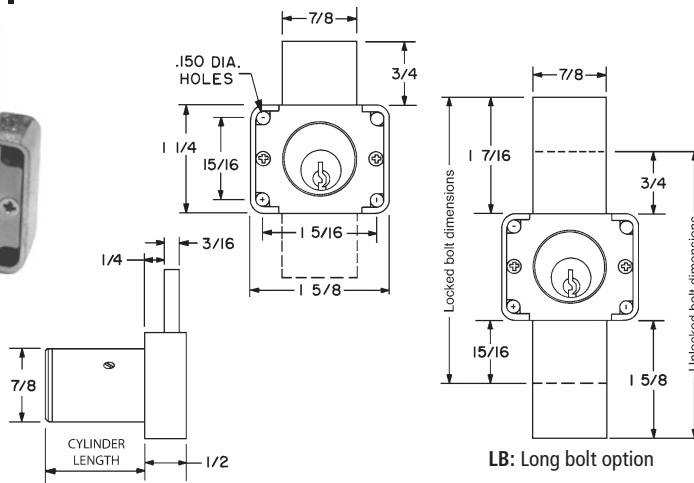
ANSI/BHMA  
A156.11 Grade 1  
E07121

Woodwork Institute  
(WI) acknowledged  
product

Item	Function	Finish	Cyl. Length	Keying
100DR	Door	26D, US4, 10B	15/16"	KD, KA 101,103,107,915 KA 51001,51002,51003,51004*note Custom keyed
100DR	Door	26D, US4, 10B	1-3/8"	
100M	Door (MRI)	26D	15/16" or 1-3/8"	
<b>Key-retaining:</b>		Specify item <b>100KL</b> for left-hand doors and <b>100KR</b> for right-hand doors. (KL and KR designation are <i>only required</i> for key retaining locks).		
<b>Key-retaining (MRI):</b>		Specify item <b>100MKL</b> for left-hand doors and <b>100MKR</b> for right-hand doors. (MKL and MKR designation are <i>only required</i> for key retaining MRI locks).		
<b>Long bolt:</b>		Specify <b>LB</b> for long bolt installed in lock.		

\*note KA# 51001, 51002, 51003 and 51004 available in US26D finish only

## ► 200DW | 200M Drawer Lock



LB: Long bolt option

ANSI/BHMA  
A156.11 Grade 1  
E07041

Woodwork Institute  
(WI) acknowledged  
product

Item	Function	Finish	Cyl. Length	Keying
200DW	Drawer	26D, US4, 10B	15/16" or 1-3/8"	KD, KA 101,103,107,915 KA 51001,51002,51003,51004*note Custom keyed
200DW	Drawer	26D, 10B	1-5/8"	
200M	Drawer (MRI)	26D	15/16", 1-3/8" or 1-5/8"	
<b>Key-retaining:</b>		Specify item <b>200KI</b> for inverted drawers and <b>200KV</b> for vertical drawers. (KI and KV designations are <i>only required</i> for key retaining locks).		
<b>Key-retaining (MRI):</b>		Specify item <b>200MKI</b> for inverted drawers and <b>200MKV</b> for vertical drawers. (MKI and MKV designations are <i>only required</i> for key retaining MRI locks).		
<b>Long bolt:</b>		Specify <b>LB</b> for long bolt installed in lock.		

\*note KA# 51001, 51002, 51003 and 51004 available in US26D finish only

### SPECIFICATIONS

- Keying:** Can be keyed together with other N Series locks
- Rekeyable:** Easily rekeyable via set screw cylinder release mechanism
- ANSI/BHMA:** Passed ANSI/BHMA A156.11 Grade 1 performance requirements. Equivalent to E07121(100DR) / E07041(200DW).
- 100M/200M:** M Series (MRI) locks are made of all non-magnetic materials and components specifically for use in MRI medical applications.
- Standard function:** Key removable in locked or unlocked position. Standard function locks are non-handed.
- Key-retaining:** Key removable in locked position only. Specify handing (KL/KR for doors or KI/KV for drawers) when ordering.
- US Patent Nos:** 4,899,563; 4,920,774
- Body:** Zinc die cast
- Cylinder:** Solid brass, pin tumbler
- Cylinder length:** 15/16", 1-3/8" or 1-5/8"
- Barrel diameter:** 7/8"
- Finish:** 26D, US4 or 10B
- Packaged:** Packed 10 per box

### KEYING INFORMATION

- Keyway:** N Series (equivalent to National D4291 4-pin or D4292 5-pin system)
- Keys:** Includes 2 keys per lock
- Stock keying:** KD/KA - 4 pin standard
- Stock KA#:** 101, 103, 107, 915, 51001, 51002, 51003, 51004\*note
- Masterkeyed:** 5 pin standard
- Grand masterkeyed:** Available
- Keyblank 4-pin:** KBN-4-NP (equivalent to NA14, 1069L)
- Keyblank 5-pin:** KBN-5-NP (equivalent to NA12, 1069LA)
- Keyblank 5-pin copper plated:** KBN-5B (use with 100M/200M MRI locks)

### INCLUDED ACCESSORIES

- 100DR:** 2 keys, 56-1 bar strike, and lock mounting screws
- 100M:** 2 keys, 56-1 bar strike, and lock mounting screws (keys, components and materials are non-ferrous/non-magnetic)
- 200DW:** 2 keys, 12-3 angle strike, and lock mounting screws
- 200M:** 2 keys, 56-1 bar strike, and lock mounting screws (keys, components and materials are non-ferrous/non-magnetic)

### OPTIONAL ACCESSORIES

- See the accessories section of this catalog for a complete list.
- Spacers:** WP21 (3/32" thick), WP22 (1/4" thick), WP23 (1/2" thick)
- Strikes:** 07S, 12-1, 12-2, 12-3, 12-4, 56-1
- Trim collars:** TR1256
- Through-bolt hardware:** ETS2 trim plate, ETS2-PL trim pull and ETST2 template
- Long bolt (bolt only):** 15-1-35 for use with 100DR/100M or 200DW/200M locks