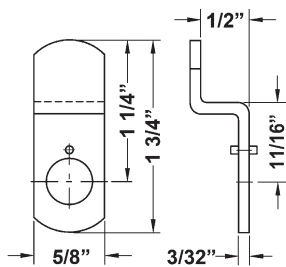


► Offset Cams For B7, DCN, DCR

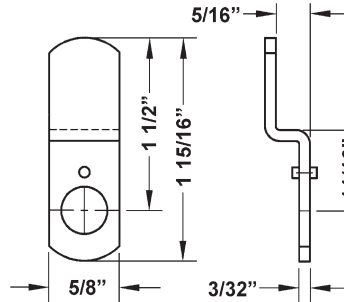
- DCNP-100-BC5.....1/2" offset cam
- DCNP-100-LBC.....long offset cam
- DCNP-100-HD.....1-7/16" heavy duty offset cam
- DCNP-100-HD2.....1-3/4" heavy duty offset cam
- DCNP-100-HD3.....1/8" heavy duty offset cam
- DCNP-100-HC1.....offset hook cam

SPECIFICATIONS

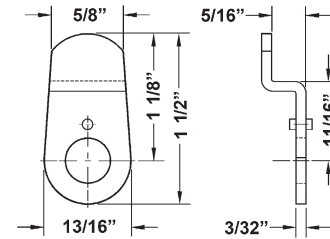
DCNP cams work with our 3/4" cam lock series DCN, DCR or B7. All offset cams are reversible and can be used in either the inbent or outbent position. See the applicable product page for accessories that ship standard with each product.



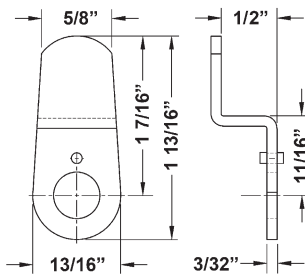
DCNP-100-BC5
1/2" offset cam



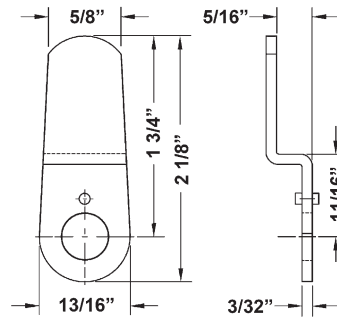
DCNP-100-LBC
15/16" offset cam



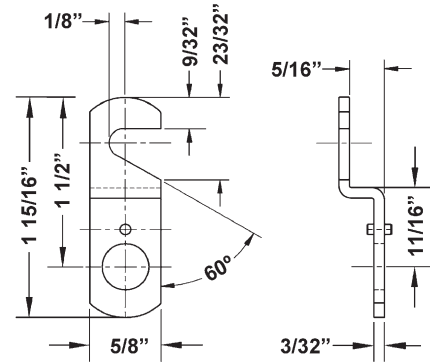
DCNP-100-HD3
1-1/8" heavy duty offset cam



DCNP-100-HD
1-7/16" heavy duty offset cam



DCNP-100-HD2
1-3/4" heavy duty offset cam



DCNP-100-HC1
offset hook cam

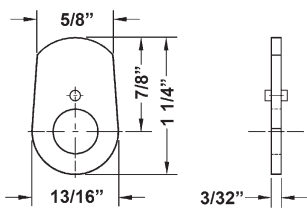
► Straight Cams For B7, DCN, DCR

- DCNP-HD-875.....7/8" short cam
- DCNP-HD-1.....1" short cam
- DCNP-100-SC2.....1-3/4" heavy duty straight cam
- DCNP-100-LC.....long 3" straight cam

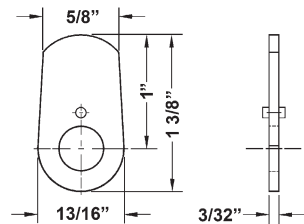
SPECIFICATIONS

DCNP cams work with our 3/4" cam lock series DCN, DCR or B7. All offset cams are reversible and can be used in either the inbent or outbent position. See the applicable product page for accessories that ship standard with each product.

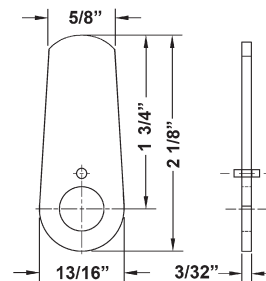
APPLICATION NOTE
Use the DCNP-HD-875 cam with our DCN2 series cam locks to retrofit **Hollman Lockers** brand keyed cam locks.



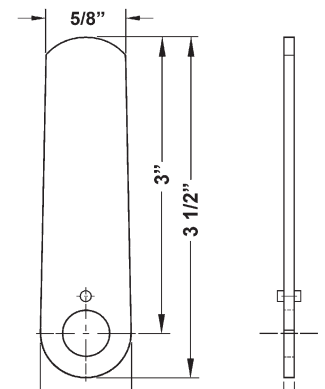
DCNP-HD-875
short cam



DCNP-HD-1
short cam



DCNP-100-SC2
1-3/4" heavy duty straight cam



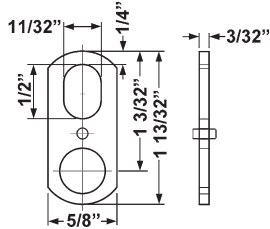
DCNP-100-LC
long 3" straight cam

► Specialty Cams For B7, DCN, DCR

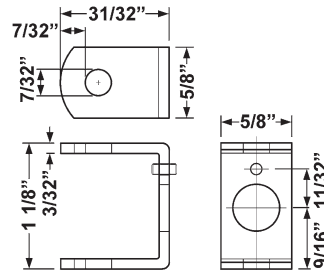
- DCNP-100-B1 Straight 1-3/32" long with oval cutout
- DCNP-100-B2 U-shaped bent cam
- DCNP-100-B3 Straight hook cam
- DCNP-100-WB short cam with perpendicular arm

SPECIFICATIONS

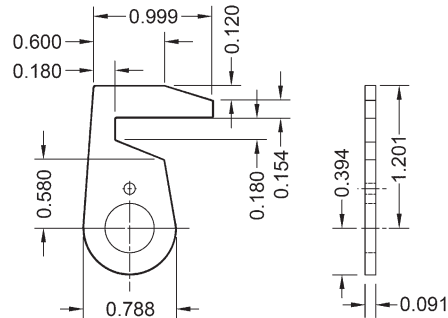
DCNP cams work with our 3/4" cam lock series DCN, DCR or B7. All offset cams are reversible and can be used in either the inbent or outbent position. See the applicable product page for accessories that ship standard with each product.



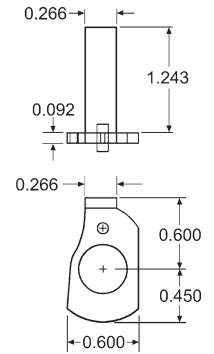
DCNP-100-B1
straight cam w/cutout



DCNP-100-B2
U-shaped cam

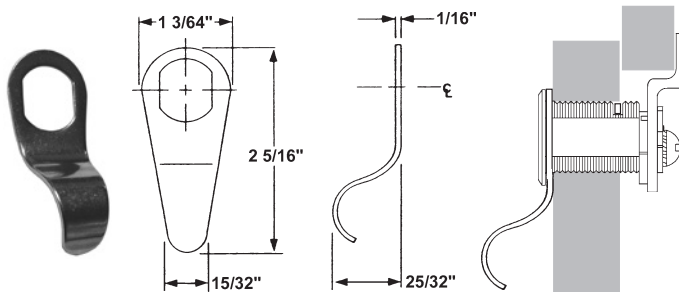


DCNP-100-B3
straight hook cam



DCNP-100-WB
short cam with perpendicular arm

► Other Accessories For B7, DCN, DCR



DCNP-300-FP

Finger pull for use with DCN and DCR series cam locks. Eliminates need for additional cabinet pull. Mounts between front of cam lock and cabinet face. Stainless steel finish.

KEY-RETAINING CAM SHIFTERS

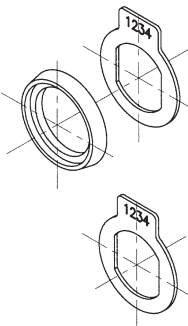


DCNP-200-KR
key-retaining drawer cam shifter



DCNP-200-KDR
key-retaining door cam shifter

NUMBER PLATES & KITS



T37-NKIT
Number Plate Kit
For use with B7 or T37 only

T37DC-NP
Number Plate
For use with DCN, DCR, B7, T37

WASHERS



DCNP-SPW
pronged wood washer



DCNP-GW
self-adhesive clear plastic washer for mounting lock on glass

