

► ETS Series Through-bolt mounting hardware

ETS SERIES (a)

Exterior through-bolt plate

Attractive mounting: External metal through-bolt plate *figure (a)* allows for flush mounting of the cabinet lock face with face of cabinet

Increases security: Reinforces the cabinet face by direct connection of lock mounting screws to through-bolt plate's binder posts

Available finishes: US3 and 26D

Includes: Mounting screws

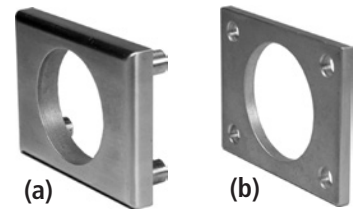
ETST SERIES (b)

Spacer/template for through-bolt plate

Mounting guide: The spacer/template *figure (b)* allows for proper mounting hole placement of external through-bolt plate

Spacer: Can be used as a 1/8" shim spacer

Available finishes: US3 and 26D

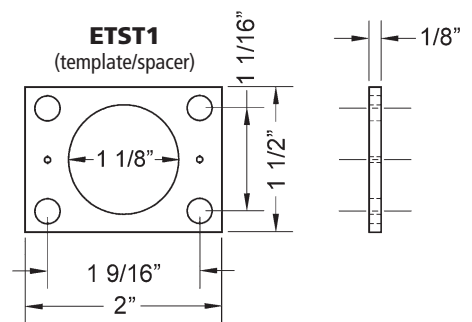
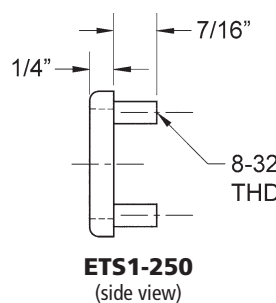
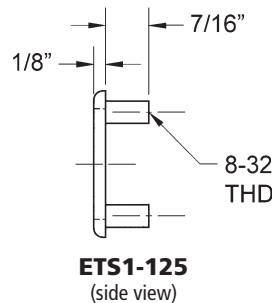
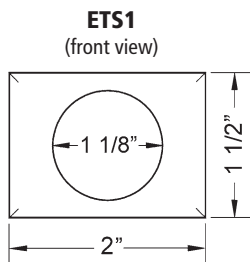
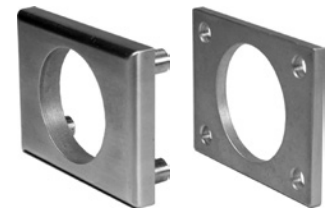


Through-bolt plates and spacer/templates increase security by providing through-bolt mounting of Olympus cabinet locks. U.S. Patent No. D490,686 S

► ETS1 | ETST1

For use with 700, 721, 754, 777, 800, 850, 854, 888, 931, 950, L72V, L92V

| Item | Finish | Description |
|----------|----------|---|
| ETS1-125 | 26D, US3 | 1/8" thick through-bolt plate |
| ETS1-250 | 26D, US3 | 1/4" thick through-bolt plate |
| ETS1B | 26D, US3 | 1/4" thick through-bolt plate (no hole) |
| ETST1 | 26D, US3 | Through-bolt plate spacer/template |



► ETS4 | ETS5

For use with 777, 888

| Item | Finish | Description | Use With |
|------|----------|-------------------------------|------------|
| ETS4 | 26D, US3 | 1/2" thick through-bolt plate | 777 Series |
| ETS5 | 26D, US3 | 1/2" thick through-bolt plate | 888 Series |

