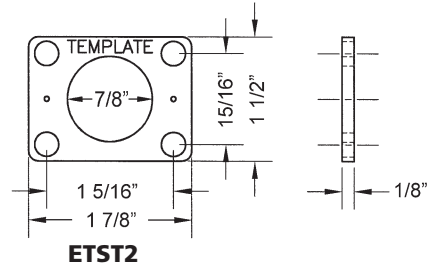
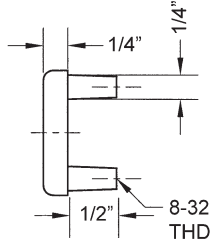
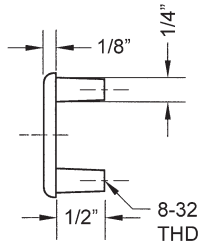
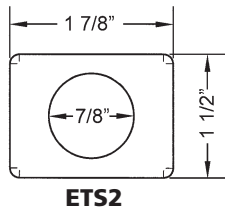
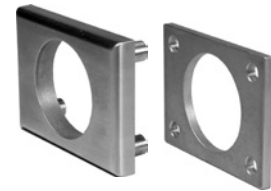


### ► ETS2 | ETST2

For use with 100, 200, 500, 600, L20V

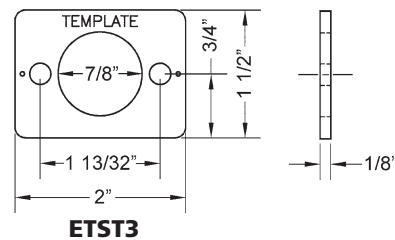
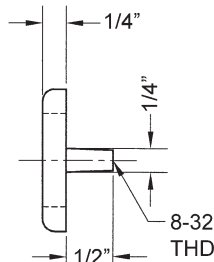
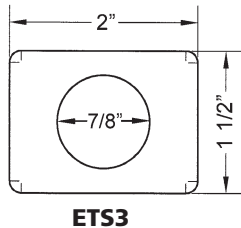
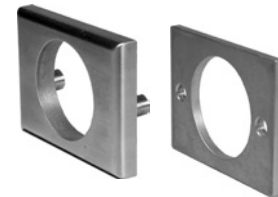
Item	Finish	Description
ETS2-125	26D, US3	1/8" thick through-bolt plate
ETS2-250	26D, US3	1/4" thick through-bolt plate
ETST2	26D, US3	1/8" spacer/template



### ► ETS3 | ETST3

For use with N078, R078

Item	Finish	Description
ETS3	26D, US3	1/4" thick through-bolt plate
ETST3	26D, US3	1/8" spacer/template



### ► ETS6

For use with 999, 998, 997, 996

Item	Finish	Description
ETS6	26D, US3	1/4" thick through-bolt plate

