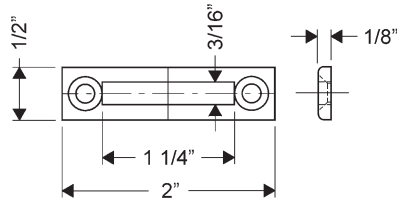
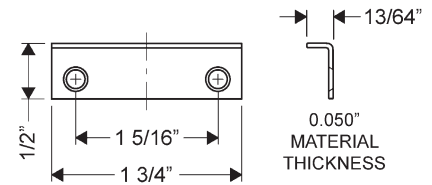


► Strikes

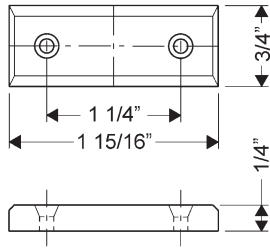
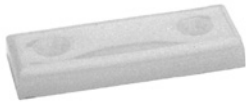
10-052 Slotted strike
Finish: 26D finish



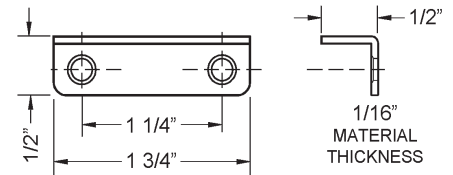
12-1 Angle strike
Finish: 26D or US4



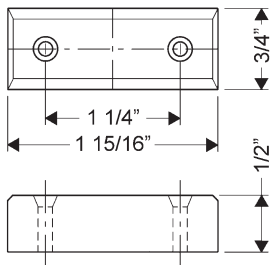
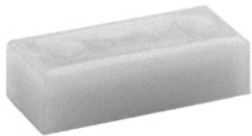
10-054 1/4" bar strike
Finish: White plastic



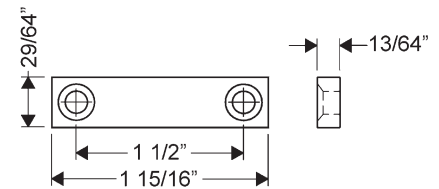
12-3 Medium angle strike
Finish: 26D or US4



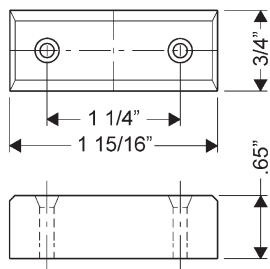
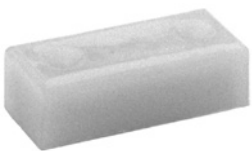
10-055 1/2" bar strike
Finish: White plastic



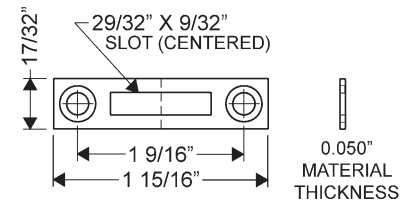
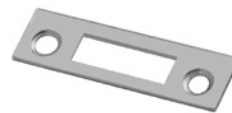
56-1 Bar strike
Finish: 26D or US4



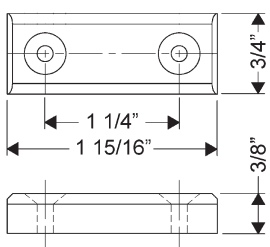
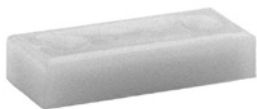
10-057 .65" bar strike
Finish: White plastic



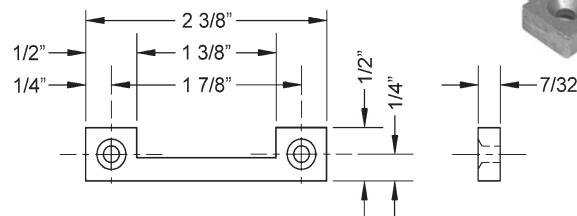
07S Slotted strike
Finish: 26D or US4



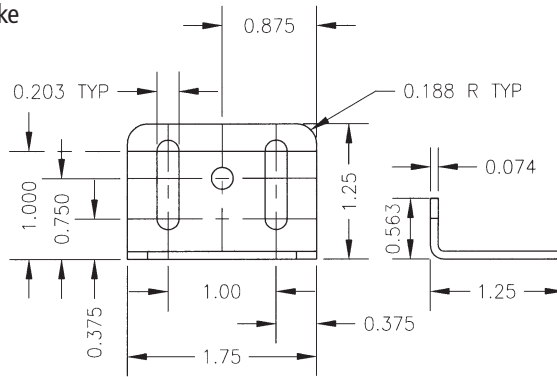
10-058 3/8" bar strike
Finish: White plastic



10-056 Notched bar strike
Finish: 26D



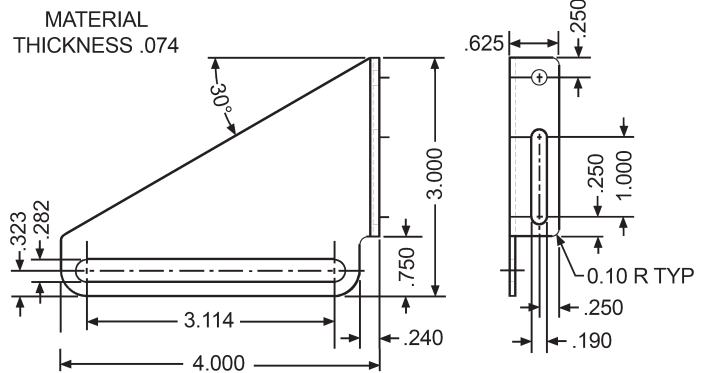
12-2 Heavy duty angle strike
Finish 26D



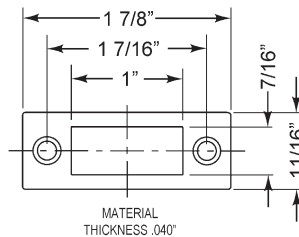
12-4-ZP Frameless drawer strike
Finish Zinc plated



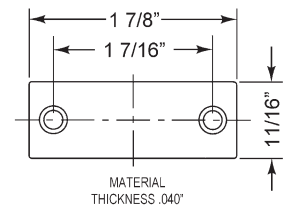
Provides a locking point when there is no frame between drawers. Can be mounted on left or right side of cabinet frame.



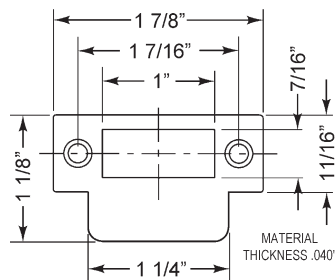
725-SP-MD Slotted strike
Use with 725 mortise deadbolt
Finish US3 or (SS) Stainless Steel



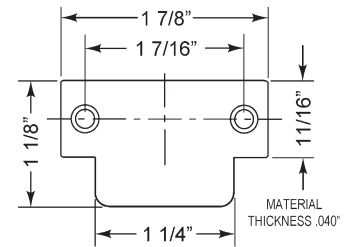
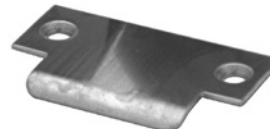
725-SP-RD Solid strike
Use with 725/CR1125 rim deadbolt
Finish US3 or (SS) Stainless Steel



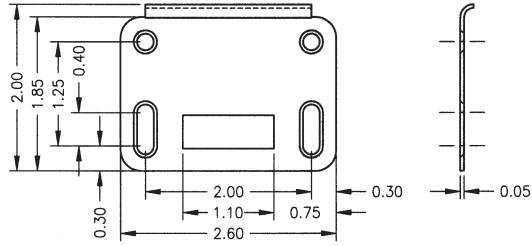
725-SP-ML Slotted lip strike
Use with 725 mortise latch
Finish US3 or (SS) Stainless Steel



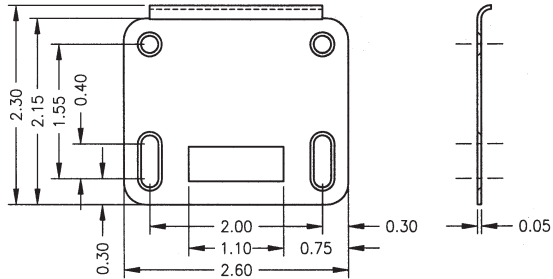
725-SP-RL Solid lip strike
Use with 725/CR1125 rim latch
Finish US3 or (SS) Stainless Steel



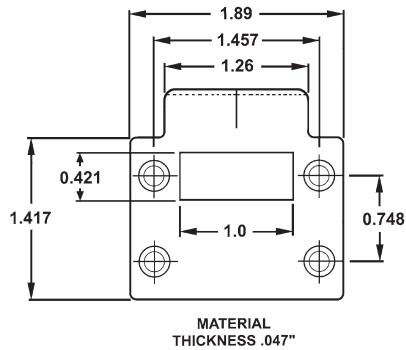
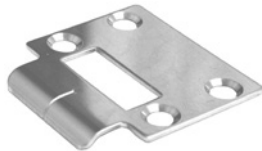
L78ST-1 Lipped strike
 Use with: L78, 1-1/8" barrel length
 and L72V, L92V
 Finish: US3 or Stainless Steel



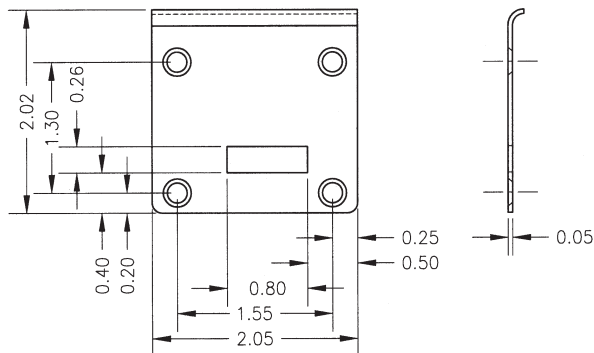
L78ST-2 Lipped strike
 Use with: L78, 1-3/8" barrel length
 Finish: US3



999-STRIKE Lipped strike
 Use with: 996, 997, 998, 999, L20V
 Finish: US3



850-210 Lipped strike
 Use with: 850/950, 1-1/8" barrel length
 Finish: US3



850-211 Lipped strike
 Use with: 850, 1-3/8" barrel length
 Finish: US3

