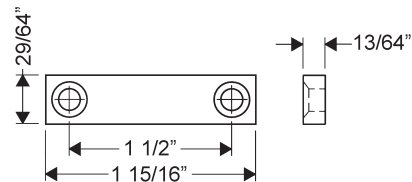
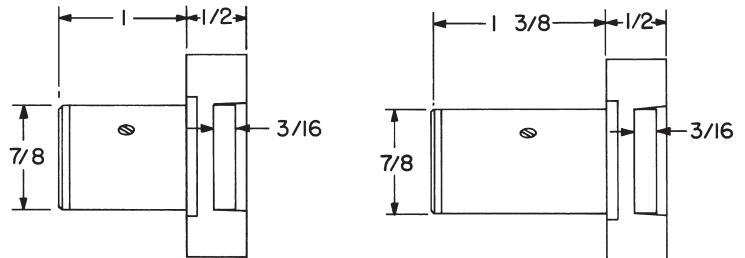
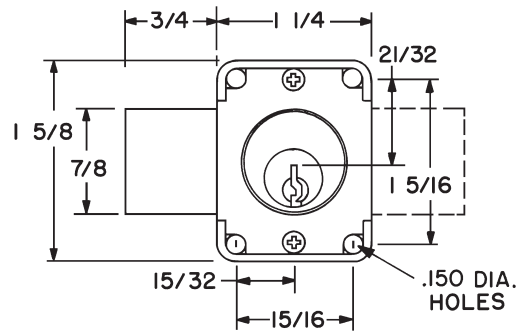
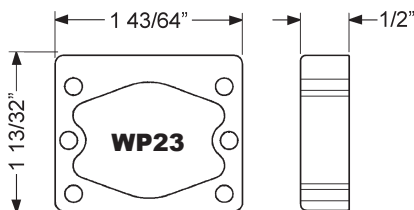
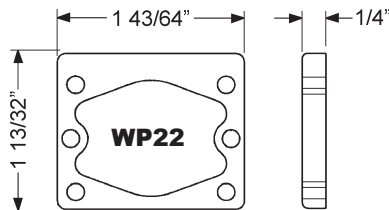
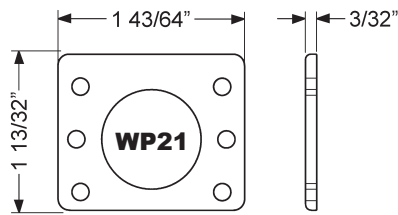
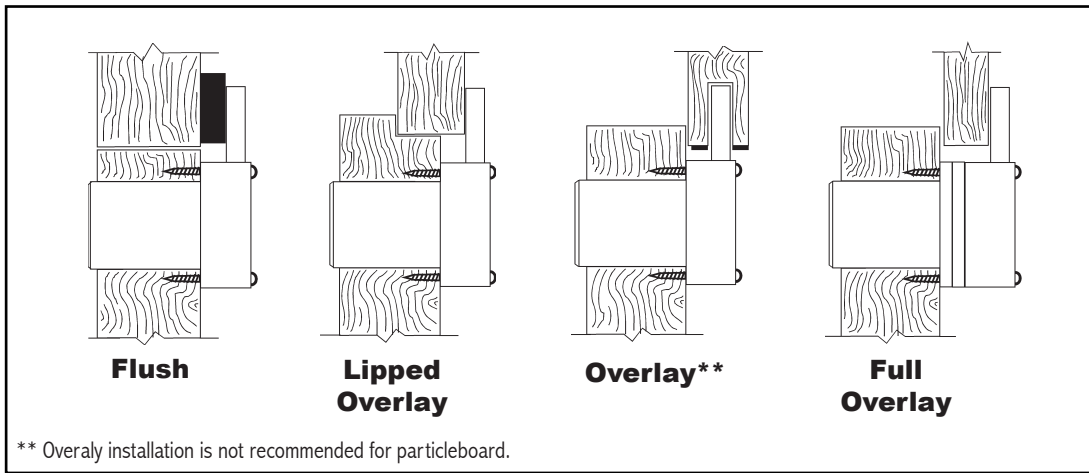


Installation Instructions

500DR

Typical Installation



56-1 - bar strike

Note: Use of spacers and strikes depends on application and material thickness.

Title Installation instructions for 500DR series cabinet door lock					
Series 500DR	Barrel Length 7/8" or 1-3/8"	Bolt type Deadbolt	Mounting Surface	Revision Date 11/2013	