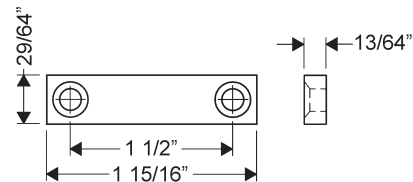
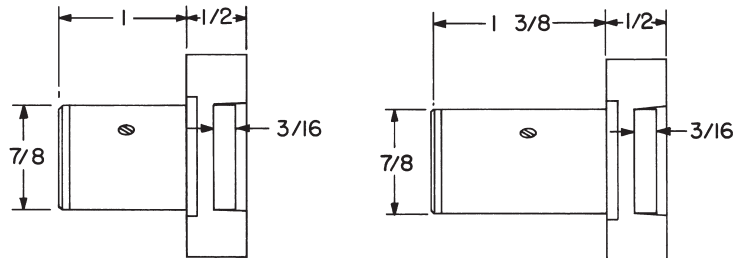
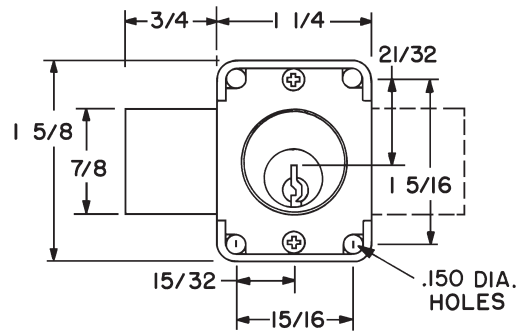
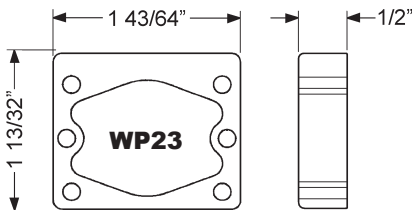
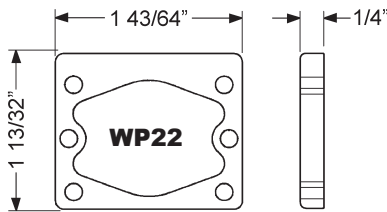
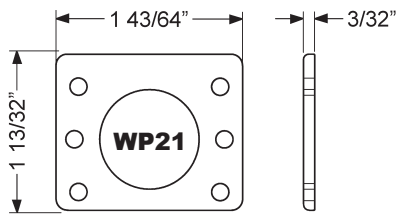
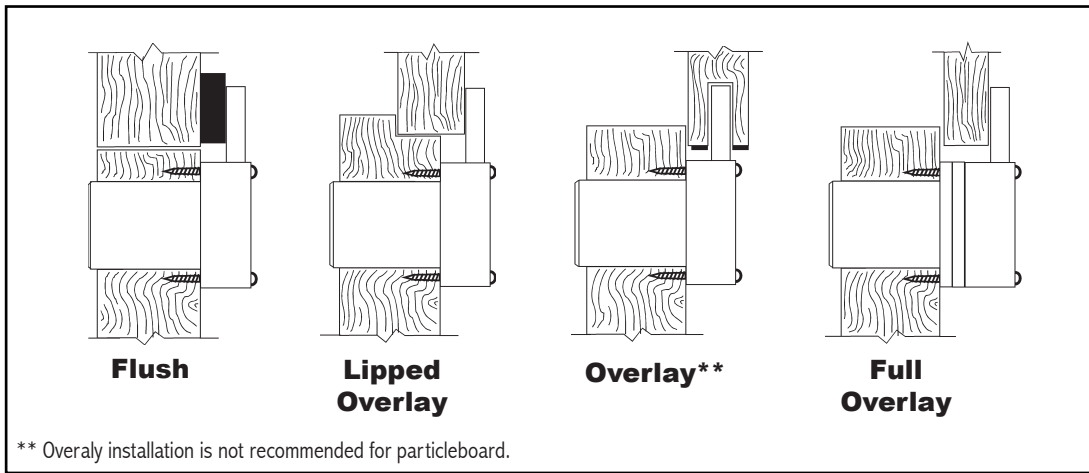


# Installation Instructions

## 500M

### Typical Installation



**56-1 - bar strike**

**Note:** Use of spacers and strikes depends on application and material thickness.

Title <b>Installation instructions for 500M series cabinet door lock</b>					
Series <b>500M</b>	Barrel Length <b>7/8" or 1-3/8"</b>	Bolt type <b>Deadbolt</b>	Mounting <b>Surface</b>	Revision Date <b>11/2013</b>	