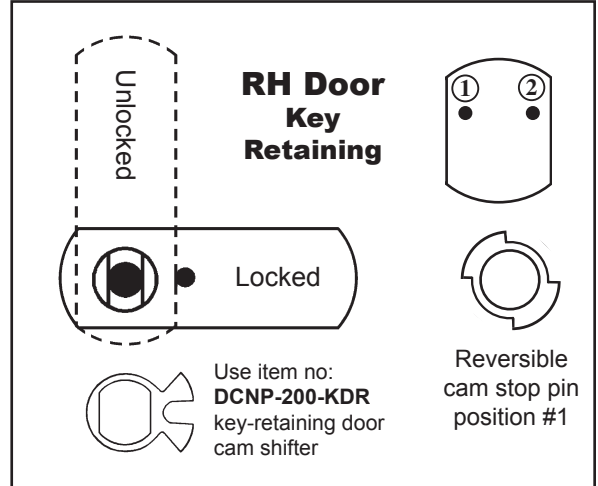
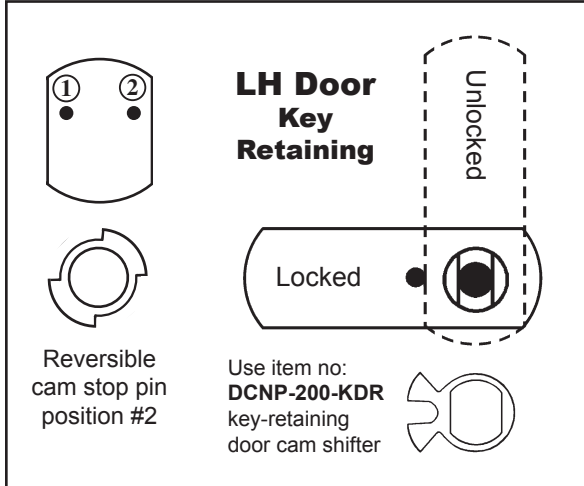


Installation Instructions

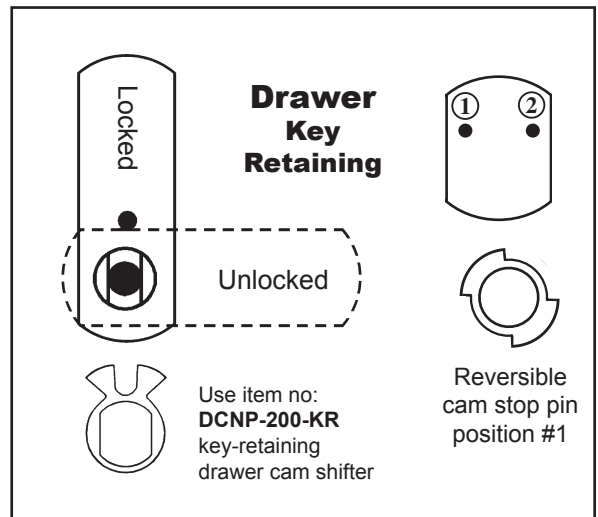
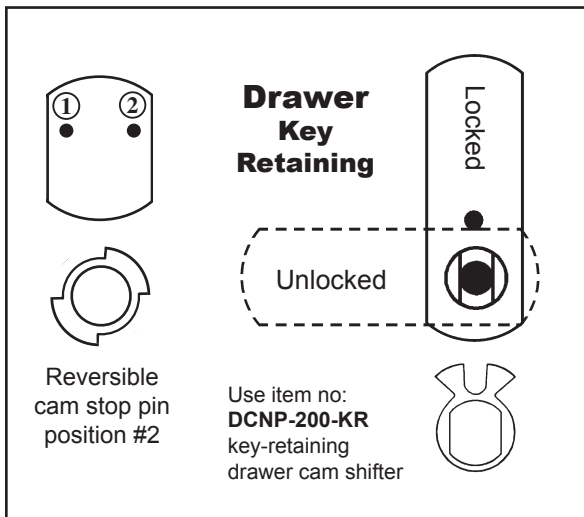
DCN/DCR/B7 Series (key-retaining assembly)

*** For proper function, install cam in the locked position ***

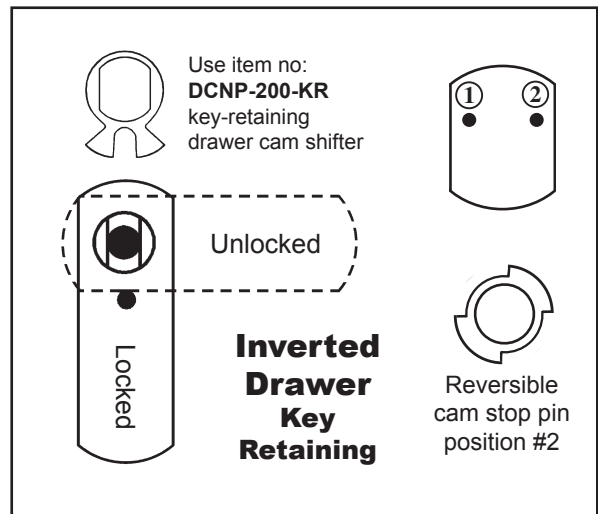
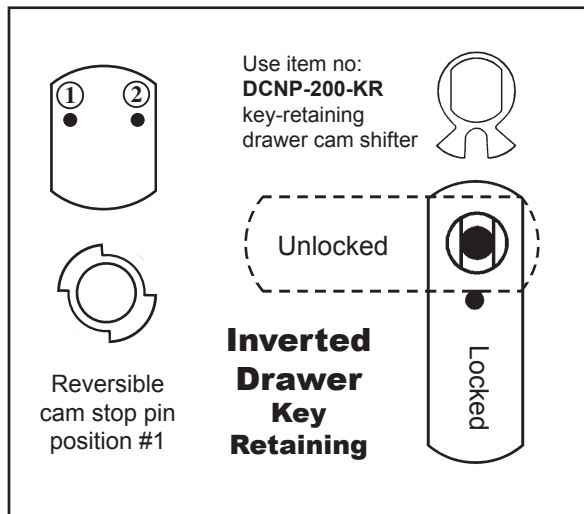
Key-retaining assembly requires purchase of additional key-retaining cam shifters
 (For doors use item no: **DCNP-200-KDR**) / (For drawers use item no: **DCNP-200-KR**)



Key removable in locked position only.



Key removable in locked position only.



Key removable in locked position only.