

Installation Instructions

T37

Inserting bolt:

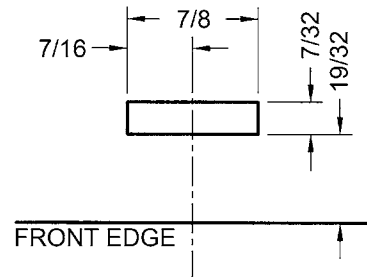
- Insert key and turn to 2:00 position.
- Insert bolt until spring snaps into place.

Removing bolt:

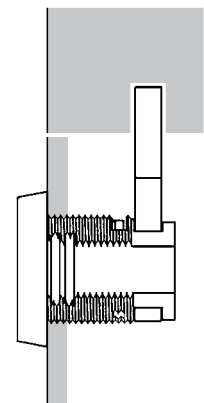
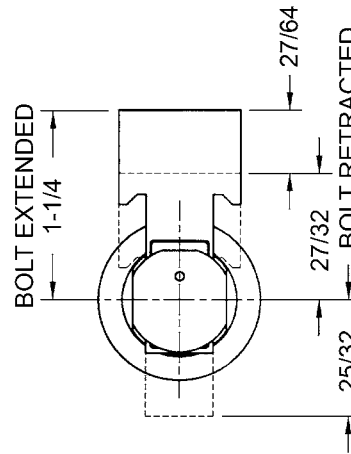
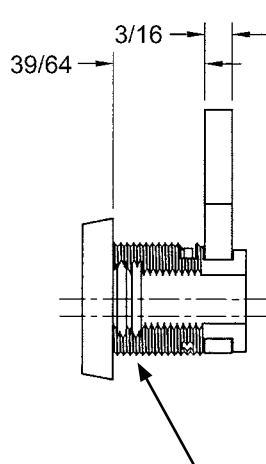
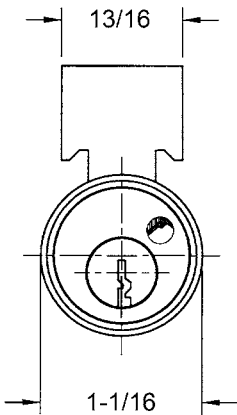
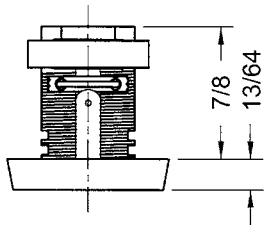
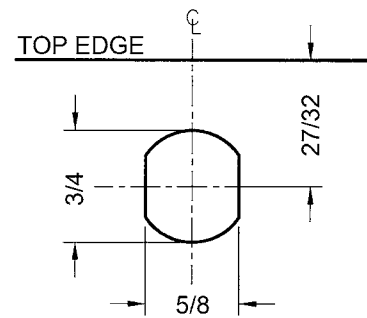
- Turn key to the 2:00 position, pull bolt up.
- Using a small tool, depress the bolt spring through the hole on the back of the lock and pull the bolt out.



DRAWER DIMENSIONS



MOUNTING HOLE DETAIL



Two slots are available for optional clip mounting. Use of spring clip allows lock to fit material thicknesses of 0" to 11/64". Clip is sold separately.

Title

Installation Instructions for T37 Series T-bolt Drawer Lock

Series

T37

Max Material

1/4"

Bolt type

T-bolt

Mounting

Surface

Revision Date

07/2009

OLYMPUS
LOCK, INC.