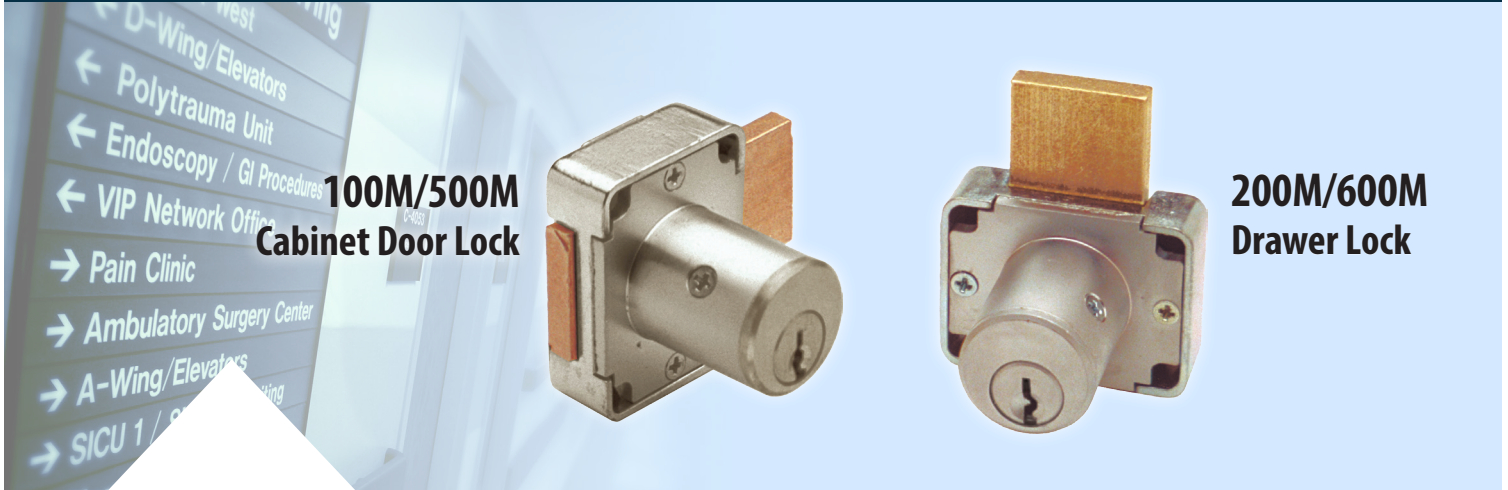


» All non-magnetic materials and components make these cabinet locks ideal for use in Magnetic Resonance Imaging (MRI) suites.

Easily rekeyable Solid brass cylinder  
Includes non-magnetic bar strike  
Copper plated brass keys

N Series: National keyway  
R Series: CCL R1 keyway  
Custom keyed to your specifications

# MRI SERIES CABINET LOCKS



## MRI Series

All non-ferrous (non-magnetic) materials and components suitable for use in Magnetic Resonance Imaging (MRI) suites.

### 100M/200M

N Series National keyway  
Stock KD, KA 4 pin standard  
KA #s 101,103,107, 915  
Custom/master keying available

### 500M/600M

R Series CCL R1 keyway  
Stock KD, KA 5 pin standard  
KA #s 4T2,4T3  
Custom/master keying available

### CABINET DOOR LOCK

Barrel length: 7/8" or 1-3/8"  
Standard: Non-handed, Key removable in locked or unlocked position.  
Key-retaining: Key removable in locked position only. Specify handing (KL = left-hand or KR = right-hand) at time of order.

### CABINET DRAWER LOCK

Barrel length 200M: 7/8", 1-3/8" or 1-5/8"  
Barrel length 600M: 7/8" or 1-3/8"  
Standard: Non-handed, Key removable in locked or unlocked position.  
Key-retaining: Key removable in locked position only. Specify handing (KV = vertical-hand or KI = inverted-hand) at time of order.

### GENERAL SPECIFICATIONS

Rekeyable: Easily rekeyable via set-screw cylinder removal mechanism  
Testing: Passed ANSI/BHMA A156.11 Grade 1 cycle testing. All other requirements of ANSI/BHMA A156.11, no less than a Grade 2 performance was attained.  
US Patent Nos: 4,899,563; 4,920,774  
Body: Zinc die cast  
Bolt: Brass, 3/4" projection  
Barrel diameter: 7/8"  
Finish: US26D (satin chrome)  
Includes: 56-1 zinc bar strike, 2 copper plated brass keys per lock, all stainless steel and/or brass screws

**OLYMPUS**  
**LOCK, INC.**  
*The cabinet lock innovators.*

18424 Highway 99 • Lynnwood, WA 98037  
Phone 206-362-3290 • Toll-free 800-525-0954 • Fax 206-362-3569  
[www.olympus-lock.com](http://www.olympus-lock.com) • [info@olympus-lock.com](mailto:info@olympus-lock.com)