



The Olympus News

We are your cabinet lock innovators.

May 2007

A publication of
Olympus Lock, Inc.

IN THIS ISSUE

New! 931 Series

*729R SFIC Ratchet
Lock*

*Key Retaining
Products*

10B Products

Olympus Posters

Olympus Website

Current Literature

OLYMPUS
LOCK, INC.

18424 Highway 99
Lynnwood, WA 98037
206-362-3290
800-525-0954
Fax 206-362-3569
www.olympus-lock.com
info@olympus-lock.com

New!



All locks sold
less IC core.

931 Series

For Medeco/Yale/Assa IC Core

Olympus is pleased to announce the newest member of our cabinet lock family—the 931 Series door and drawer locks for Medeco, Yale and ASSA's Yale compatible 6-pin interchangeable core cylinders. These locks allow you to key your cabinets into your new or existing Medeco or Yale door hardware system. Locks ship standard with three 10-350 spacers and one each 10-054 and 10-055 plastic bar strikes to allow the locks to work with various material thicknesses. Available with standard or key retaining function and in 26D or US3 finish. Custom plating is available upon request—call Olympus for price and availability.

Medeco core: Accepts Medeco #32-0201 (6-pin) IC core cylinder. Requires Medeco #94-0009 spacer (Olympus #931-1 included).

Yale core: Accepts Yale #1210 Series (6-pin) IC core cylinder.

ASSA core: Accepts ASSA's Yale 6 pin compatible large format IC core cylinder.

Includes:

- 3 ea. 10-350 - Plastic spacers
- 1 ea. 10-054 - 1/4" bar strike
- 1 ea. 10-055 - 1/2" bar strike
- 1 ea. 931-PA - Plastic actuator
- 1 ea. 931-1 - Olympus internal spacer for Medeco 6-pin cores



931DR
Door



931DW
Drawer

931DR - Door Deadbolt				
Part #	Finish	Barrel	Description	List Price Ea.
931DR	26D, US3	1-3/8"	IC Door Lock	\$52.31
931DR-KR	26D, US3	1-3/8"	IC Door Lock - Key Retaining	\$57.31
931DW - Drawer Deadbolt				
Part #	Finish	Barrel	Description	List Price Ea.
931DW	26D, US3	1-3/8"	IC Drawer Lock	\$52.31
931DW-KR	26D, US3	1-3/8"	IC Drawer Lock - Key Retaining	\$57.31

Product Spotlight: 729R SFIC Ratchet Lock

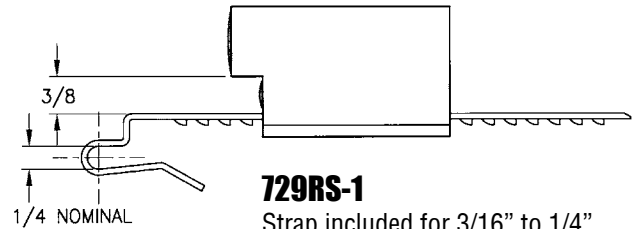
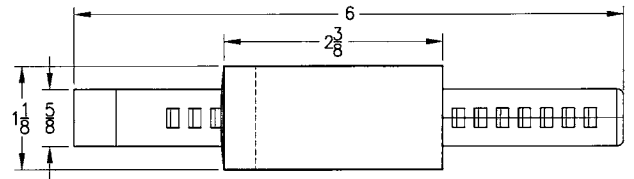
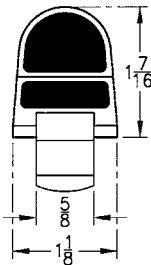


729R Ratchet Lock

SFIC sliding door ratchet lock accepts Best, Arrow, Falcon or compatible small format interchangeable cores. Optional straps 729RS-2 and 729RS-3 add flexibility to this product.

Features & Benefits

- True ratcheting function! No key required to relock doors.
- Alternate straps fit a variety of material thicknesses.
- The straps #1 (included) and #2 can be clamped on or our alternate strap #3 can be secured by the use of two set screws.
- Overhang on back of lock prevents prying.
- Each lock includes plastic actuator to functionally test lock without core.

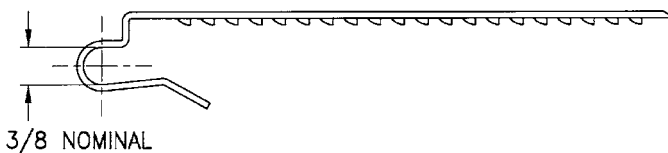


729RS-1

Strap included for 3/16" to 1/4" glass/panel thickness

729RS-2

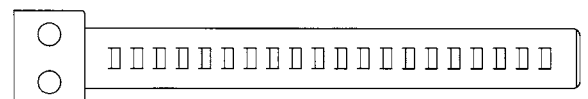
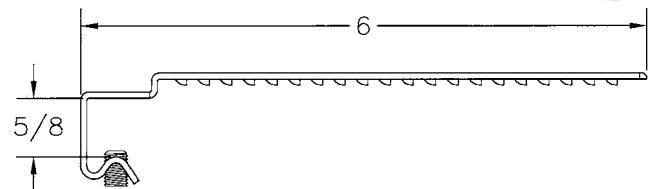
Optional strap for 3/8" glass/panel thickness



New!

729RS-3

Optional strap for 3/8" to 5/8" glass/panel thickness (adjustable)



Product Spotlight: Key Retaining, 10B Finish, Posters

What is key-retaining function?

Simply put, key retaining means the lock must be locked before its key can be removed. Olympus is now offering a variety of locks with this function.

By their nature, off course, all "latch" or "slam" locks are considered key-retaining because once the cabinet door or drawer is closed a spring pushes the latch up and engages the strike. When we refer to key-retaining function, we are referring to cam locks or deadbolt-style cabinet door and drawer locks.

Key-retaining locks

The following lock series are available with an optional key-retaining (KR) function:

DCN or DCR Series small pin cam locks - requires purchase of additional parts. Assembly into KR function is done at time of installation.

700 or 800 Schlage style deadbolt locks - order KR function directly from factory. Lock will come pre-assembled for KR function.

721 Series SFIC core deadbolt locks - standard package contains all parts necessary for KR function. Reconfiguration can be done by the customer, or can be ordered with KR function directly from factory.

725MD-DW or 725RD-DW Series SFIC core deadbolt drawer locks - order KR function directly from factory.

777/888 Schlage LFIC core deadbolt locks - order KR function directly from factory.

931 Series Medeco/Yale IC core deadbolt locks - order KR function directly from factory

720 Series SFIC cam lock - comes with all parts necessary for KR function. Assembly into KR function is done at time of installation.

820 Series Schlage cam lock - comes with all parts necessary for KR function. Assembly into KR function is done at time of installation.

920 Series Schlage LFIC cam lock - comes with all parts necessary for KR function. Assembly into KR function is done at time of installation.

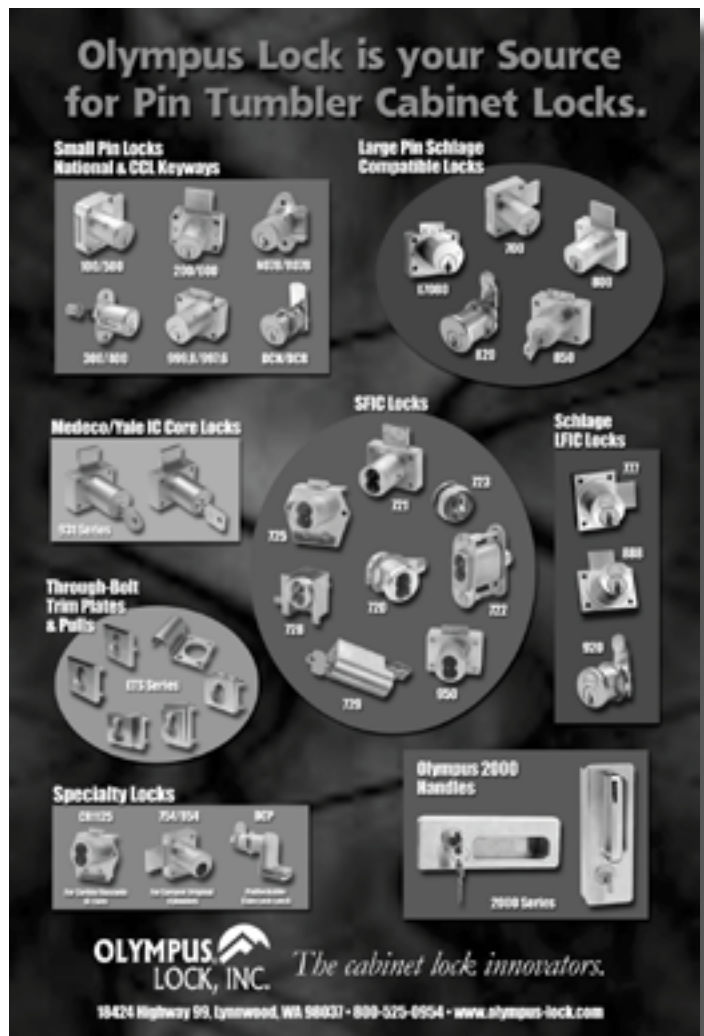
US10B (BHMA 613) Finish

Because US10B finish is gaining in popularity, Olympus is now stocking limited quantities of US10B finish on the items listed below. Call for price and availability.

DCN1, DCN2, DCN3, DCN4
100DR (7/8"), 200DW (7/8" and 1-3/8")
300SD, 400SD
500DR (7/8"), 600DW (7/8" and 1-3/8")
700S (1-1/8"), 800S (1-1/8" and 1-3/8")
700LCA, 800LCA, 800LCM

Olympus Lock Poster

Our wildly popular poster has been updated with our most recent 931 Medeco/Yale product. Please call us if you would like to get your copy.



Olympus Website / Literature

Olympus Lock Website

Our website is up-to-date with the most current information on all of our products, including most of our accessory items. We also have copies of our catalogs, product data sheets and installation instructions available for printing and download.

www.olympus-lock.com



Current Literature

Contact your Olympus Lock representative, call Olympus directly at 800-525-0954 or email info@olympus-lock.com for the most recent version of our catalogs, price list or poster.

Full line catalog: July 2006

Condensed catalog: July 2006

Price list: July 1, 2006, Revision 1

Poster: 2006

Business Hours

7:00 am to 4:00 pm Pacific Time.

Copyright © 2007 Olympus Lock, Inc.

Olympus Lock, Inc.
PO Box 1277
Lynnwood, WA 98046