

# 500M | 600M

## R Series: Non-Ferrous MRI Deadbolt Door & Drawer Cabinet Locks

**ANSI/BHMA Grade 1**  
**E07121 | E07041**  
**For use in medical**  
**MRI applications**

### SPECIFICATIONS

**Keying:** Can be keyed together with other R Series locks

**Non-magnetic:** Contains all non-ferrous (non-magnetic) components and keys. Suitable for use in MRI (magnetic resonance imaging) applications. Includes copper plated non-magnetic keys.

**Rekeyable:** Easily rekeyable via set screw cylinder release mechanism

**ANSI/BHMA:** Passed ANSI/BHMA A156.11 Grade 1 performance requirements. Equivalent to E07121(500M) / E07041(600M).

**Standard function:** Key removable in locked or unlocked position. Standard function locks are non-handed.

**Key-retaining:** Key removable in locked position only. Specify handing (KL/KR for doors or KI/KV for drawers) when ordering.

**Long bolt:** Extends bolt 3/4" on both ends. Specify -LB option when ordering.

**Standard locks:** See our 500DR/600DW products

**US Patent Nos:** 4,899,563; 4,920,774

**Body:** Zinc die cast

**Cylinder:** Solid brass, pin tumbler

**Cylinder length:** 15/16" or 1-3/8"

**Barrel diameter:** 7/8"

**Finish:** US26D

**Packaged:** Packed 10 per box

### KEYING INFORMATION

**Keyway:** R Series (equivalent to CCL R1 system)

**Keys:** Includes 2 keys per lock

**Stock keying:** KD/KA - 5 pin standard

**Stock KA#:** 4T21579, 4T37526

**Masterkeyed:** 5 pin standard, 6 pin available

**Grand masterkeyed:** Available

**Keyblank 5-pin copper plated:** KBR-5B (use with 500M/600M MRI locks)

### INCLUDED ACCESSORIES

**500M:** 2 keys, 56-1 bar strike, and lock mounting screws

**600M:** 2 keys, 56-1 bar strike, and lock mounting screws

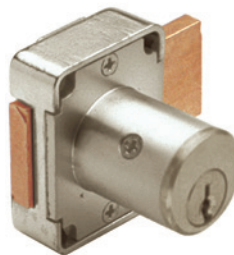
### OPTIONAL ACCESSORIES

**Spacers:** WP21 (3/32" thick), WP22 (1/4" thick), WP23 (1/2" thick)

**Trim collars:** TR1256

**Through-bolt hardware:** ETS2 trim plate, ETS2-PL trim pull and ETST2 template

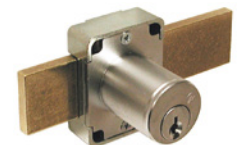
**Extended (long) bolt:** 15-1-35 (for use with 500M or 600M)



US26D finish



56-1



With long-bolt option

### 500M

**Function:** Cabinet door lock

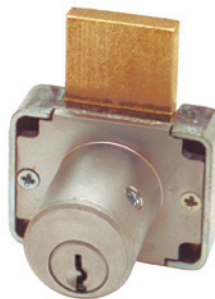
**ANSI/BHMA No.** E07121

**Barrel length:** 15/16" or 1-3/8"

**Extended bolt:** Extends overall bolt length by 1-1/2". Specify -LB option at time of order.



Includes copper plated non-magnetic keys



US26D finish



56-1



With long-bolt option

### 600M

**Function:** Drawer lock

**ANSI/BHMA No.** E07041

**Barrel length:** 15/16" or 1-3/8"

**Extended bolt:** Specify -LB option at time of order.



Includes copper plated non-magnetic keys

# 500M | 600M

## R Series: Non-Ferrous MRI Deadbolt Door & Drawer Cabinet Locks

**ANSI/BHMA Grade 1  
E07121 | E07041  
For use in medical  
MRI applications**

### OPTIONAL ACCESSORIES - See our website for a complete list of optional components.

#### Internal plastic spacers

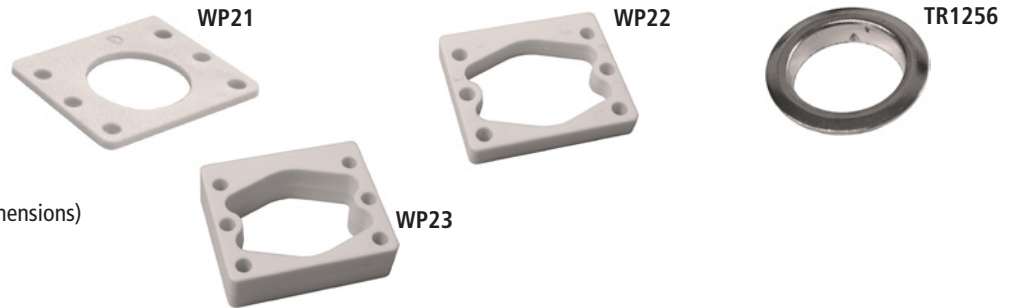
- WP21 3/32" thick plastic spacers
- WP22 1/4" thick plastic spacers
- WP23 1/2" thick plastic spacers

#### Trim Ring

- TR1256 trim ring

#### Extended bolt

- 15-1-35 (see below for installed dimensions)



#### Through-bolt plate

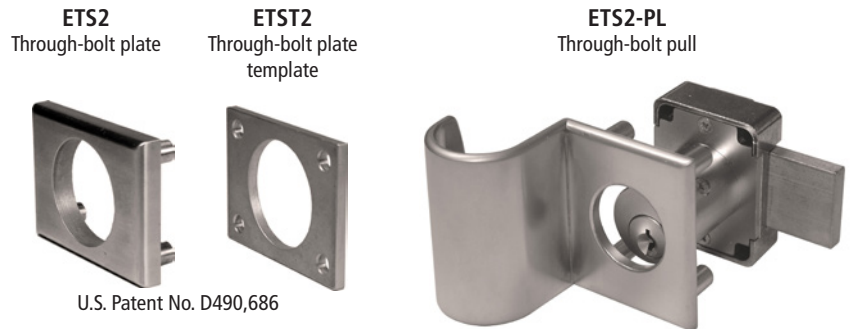
External metal 1/8" or 1/4" through-bolt plate allows for an attractive flush mounting of the cabinet lock face. Available in US3 or US26D finish.

- ETS2-125 through-bolt plate, 1/8" thick
- ETS2-250 through-bolt plate, 1/4" thick

#### Through-bolt plate template

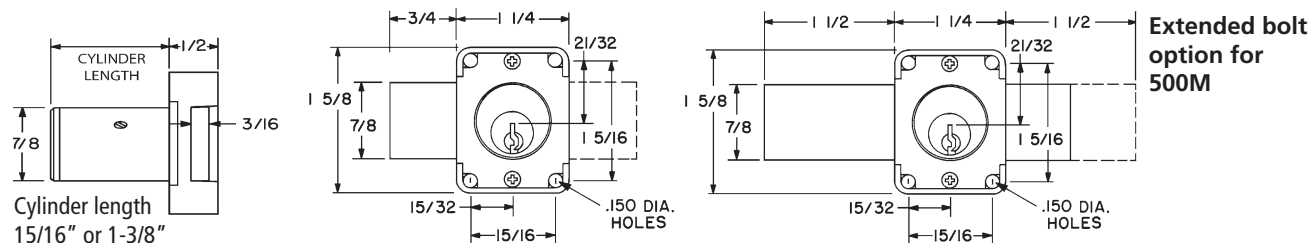
Allows for proper mounting hole placement of through-bolt plate. Can be used as a 1/8" shim spacer. Available in US3 and US26D finish.

- ETST2 through-bolt plate template



## DIMENSIONS

### 500M Cabinet Door Lock



### 600M Drawer Lock

