

Strikes

For Olympus Cabinet Locks

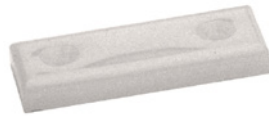
12-1

Type: Angle strike
Finish: 26D or US4



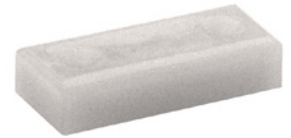
10-054

Type: Bar strike, 1/4" thick
Material: White nylon



10-058

Type: Bar strike, 3/8" thick
Material: White nylon



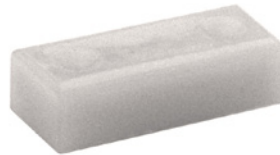
56-1

Type: Bar strike
Finish: 26D or US4



10-055

Type: Bar strike, 1/2" thick
Material: White nylon



10-052

Type: Slotted bar strike
Finish: 26D



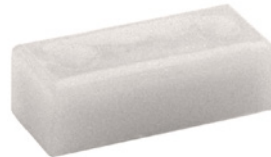
12-3

Type: Medium angle strike
Finish: 26D or US4



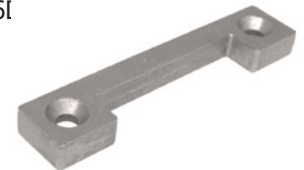
10-057

Type: Bar strike, .65" thick
Material: White nylon



10-056

Type: Notched strike
Finish: 26I



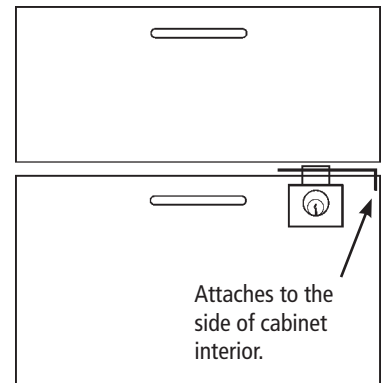
12-2

Type: Heavy duty angle strike
Finish: 26D



12-4

Type: Frameless drawer strike
Finish: Zinc plated



12-5

Type: Heavy duty slotted strike
Finish: SS (Stainless Steel)



Our new frameless drawer strike provides a locking point when there is no frame between drawers. This strike is mounted on the side of the cabinet frame and provides a locking point when no other locking points are available.

Strikes

For Olympus Cabinet Locks

STRIKES

725-SP-MD

Use with: 725 Mortise Deadbolt
Finish: US3 or Stainless Steel



725-SP-ML

Use with: 725 Mortise Latch
Finish: US3 or Stainless Steel



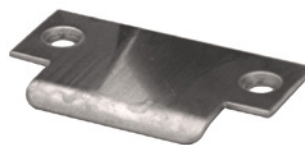
725-SP-RD

Use with: 725 Rim Deadbolt
Finish: US3 or Stainless Steel



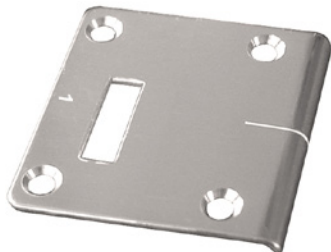
725-SP-RL

Use with: 725 Rim Latch
Finish: US3 or Stainless Steel



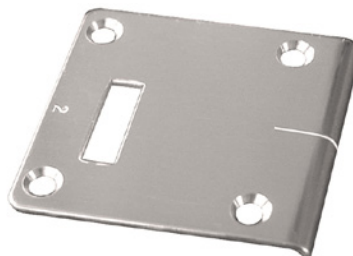
850-210

Use with: 850 1-1/8" barrel length
Finish: US3



850-211

Use with: 850 1-3/8" barrel length
Finish: US3



L78ST-1

Use with: L78 1-1/8"
Finish: US3



L78ST-2

Use with: L78 1-3/8"
Finish: US3

999-STRIKE

Use with: 996, 997, 998, 999
Finish: US3

