

Newsletter

We are your cabinet lock innovators.

Spacer accessories provide a flush fit and increased security



IC core lock face without spacers



IC Core lock face with exterior spacer #ETS1 and through-bolt mount



Lock face with interior spacers



Lock back with interior spacers

ETS2/ETST2 Reinforcing Trim Spacer and Template

Olympus Lock's #ETS2 external 1/4" metal reinforcing trim spacer provides an attractive flush mounting of the cabinet lock face as well as the ability to through-bolt mount the cabinet lock.

Having the cabinet lock face flush with the casework gives the final installation a more finished and pleasing appearance, and eliminates the lock barrel from sticking out past the cabinet face. Through-bolt mounting increases security of installation through reinforcement of cabinet face and direct connection of lock mounting screws to external reinforcing trim spacer's binder posts.

The #ETS2 reinforcing trim spacer is mounted on the exterior of the cabinet. The cabinet lock is secured by placing screws from the back of the cabinet lock through the face of the cabinet and into the exterior trim spacers binder posts.

The #ETST2 template allows for proper mounting hole placement of reinforcing trim spacer. It can be used as a 1/8" shim spacer on either the exterior or interior of the cabinet.

WP21 Spacer

Olympus Lock's #WP21 internal plastic spacer allows for a flush fit of the cabinet lock face with the face of the casework material. Having the cabinet lock face flush with the casework gives the final installation a more finished and pleasing appearance, and eliminates the lock barrel from sticking out past the cabinet face.



2720 N.E. 115th Street
Seattle, WA 98125
206-362-3290 • 800-525-0954
FAX 206-362-3569

www.olympus-lock.com
info@olympus-lock.com

In This Issue

Spacer Accessories
Product Spotlight:
100,200,500,600
Other Accessory
Products
Customer Surveys
Other Information

Product Spotlight: #100, #200, #500, #600

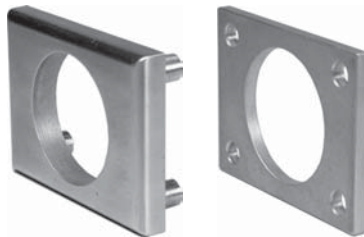
Spacer Accessories

Reinforcing trim spacer #ETS2

- External metal 1/4" reinforcing trim spacer
- Provides for through-bolt mounting through direct connection of lock mounting screws to external reinforcing trim spacer's binder posts
- Available in US3 and 26D finishes
- Includes mounting screws
- For use with Olympus #100, #200, #500, #600

Template for reinforcing trim spacer #ETST2

- Allows for proper mounting hole placement of external trim spacer
- Can be used as a 1/8" shim spacer
- Available in US3 and 26D finishes
- For use with Olympus #100, #200, #500, #600

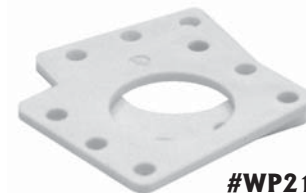


#ETS2

#ETST2

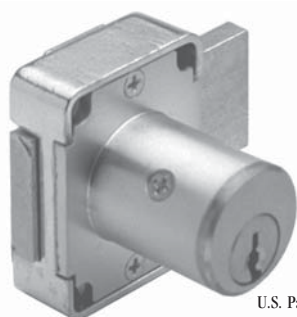
Spacer WP21

- For 3/4" material, add 1 WP21 spacer to 7/8" lock
- For 1-1/8" material, add 2 WP21 spacers to 1-3/8" lock
- For use with Olympus #100, #200, #500, #600, #N078, #R078



#WP21

100/500



U.S. Patent Nos.
4,899,563; 4,920,774

200/600



Includes
56-1 bar strike

Specify 7/8" or 1-3/8"
barrel length

General Features

- Easily rekeyable via set screw cylinder release mechanism
- Solid brass pin tumbler cylinder
- For material thicknesses: 7/8" to 1-3/8" (specify barrel length when ordering)
- Barrel diameter: 7/8"
- 26D or US4 finish
- Keyed alike, keyed different or master keyed—custom keying available
- Packed 10 per box
- Tested to ANSI/BHMA A 156.11 Grade 1 cycle testing. Withstood in excess of 40,000 cycles with no damage. In testing all other requirements of ANSI/BHMA A 156.11, no less than Grade 2 performance was attained.

National Keyway

100/200 features:

- National D4291 keyway
- Barrel lengths available: 7/8" or 1-3/8" specify the barrel length when ordering
- Includes bar strike 56-1
- Nickel plated keys / keyblanks
- KD/KA - 4 pin standard
- KA# 101, 103, 107, 915
- Master keyed - 5 pin standard

CCL Keyway

500/600 features:

- CCL R1 keyway
- Barrel lengths available: 7/8" or 1-3/8" specify the barrel length when ordering
- Includes bar strike 56-1
- Nickel plated keys / keyblanks
- KD/KA/MK - 5 pin standard
- KA# 4T21579, 4T37526
- Drilled for 6 pin

Product Spotlight: #100, #200, #500, #600

Other Accessory Products

Trim ring TR1256

- Trim ring for 7/8" diameter cabinet locks
- Available in 26D or US3
- Fits Olympus 100, 200, N078, 500, 600, R078, 999, 998, 997, 996



Strikes 12-1, 075

12-1 angle strike

- 26D or US4 finish



075 slotted strike

- 26D or US4 finish



Pin Kits

N1 - For National Keyway

R1 - For CCL Keyway



Customer Surveys

Customer Surveys are an Important Tool

At Olympus Lock, we are dedicated to continuous improvement of our products and services. An important way for us to determine which products or services require improvement is through direct advice from our customers. Your voice is heard when you complete and return your Olympus Lock Customer Survey. Please provide us with as much feedback as possible including additional comments for each major customer service area as well as anything else you feel requires our attention. Additional products you would like to see Olympus offer is also another important way for us to prioritize our product development.

When you see your Olympus Lock Customer Survey, please take a few moments to complete the survey form and return it to us. Completed surveys can be faxed to us at 206-362-3569. Your input is an invaluable tool.

Sincerely,
The Olympus Lock Team

OLYMPUS LOCK, INC.
The Olympus Lock Corporation
P.O. Box 1148, Mount
Tucker, WA 98148
Phone: 206-362-3569, 800-333-9934
Fax: 206-362-3569

Customer Survey
To help service you better, please take a few moments to fill out this questionnaire. Any additional comments or suggestions you have will be much appreciated. Please leave free to answer honestly, your input will help us improve our service to you.
Please fax completed forms to 206-362-3569

Disassembly: 1 2 3 4 5
Customer: _____

Section 1 - Customer Service Response
and is generally cooperative:
1. Returns calls, answers correspondence, and is generally cooperative.
2. You are always able to get through to our office on the phone and fax lines.
3. Our factory customer service associates are knowledgeable about our products.
4. Our factory customer service associates are knowledgeable about our pricing.
5. Our customer service representatives promptly return calls, solve problems, provide information, and technical assistance.
6. Our customer service representatives promptly return calls, solve problems, provide information, and technical assistance.
7. We provide accurate invoices and timely settlement of invoice disputes.
8. Our business hours of 7:00 am to 4:00 pm (Pacific Standard Time) adequately service your needs.

Disassembly: 1 2 3 4 5
Customer: _____

Section 2 - Order Fulfillment
9. Orders are shipped accurately.
10. Orders are shipped on schedule and/or in a timely manner.
11. Orders are shipped in good condition and properly packaged.
12. Products you request are in good condition and to your satisfaction.
13. Overall quality of product packaging.
14. Any incorrect shipments/errors are corrected immediately and to your satisfaction.

Disassembly: 1 2 3 4 5
Customer: _____

Section 3 - Independent Representative Response
15. Our independent representative agency services adequately service your needs.
16. Our independent representative agency services adequately service your needs.
17. Other parts sales program (if applicable).
18. Technical support, training, seminars, product demonstrations and technical assistance.
19. Technical support, training, seminars, product demonstrations and technical assistance.
20. Is available for inside and/or outside sales training.
21. All-around cooperation.

Disassembly: 1 2 3 4 5
Customer: _____

Section 4 - Marketing Response
22. You receive up-to-date literature and price sheets.
23. Our catalog is current and readily available.
24. Overall quality of marketing materials.

Disassembly: 1 2 3 4 5
Customer: _____

Section 5 - Overall Rating
25. What is your overall rating of the services provided by Olympus Lock, Inc.

Disassembly: 1 2 3 4 5
Customer: _____

Section 6 - Feedback
What can we do to enhance our value to you?
What new product or service would you like to see us offer?
Send back all keys for reuse (check 4 records)

Company Name: _____ Purchasing Agent: _____
Address: _____ Survey Completed By: _____
City: _____ State: _____ Zip: _____

Other Information

Digital artwork available

Contact Beth Nielsen in the Olympus Lock marketing department for free digital photos or line art on CD-ROM. Our most recent catalog is also available on CD-ROM in PDF format.

Promotional ideas

Do you have a promotional idea involving Olympus Lock? Contact Beth Nielsen in the Olympus Lock marketing department to discuss your idea.

Current literature

Contact your Olympus Lock representative or call Olympus directly for the most recent version of our catalog and price list. Current editions are:

Full line catalog: August, 2003
Condensed catalog: June, 2003
Price list: May 1, 2003 - Revision 1A

Visit our website, link to our website

Looking to see if we have anything new? Visit our website. Our website is continually updated with the most current information and new products. Visit us at www.olympus-lock.com.

Olympus Lock, Inc.
2720 NE 115th Street
Seattle, WA 98125