


Newsletter

We are your cabinet lock innovators.

NOW AVAILABLE

Our new July 2006 full line catalog and July 1, 2006 price list are now available. Please contact your Olympus Lock representative or call us at 1-800-525-0954 to request a copy.

PRODUCT CATALOG
Olympus Lock Commercial Grade Cabinet Locks & Accessories



- Patented Commercial Pin Tumbler & IC Core Cabinet Locks
- Olympus 2000 Handles Integrated Cabinet Pull & Lock
- Solid Brass Padlocks ShurLok Lock Box


July 2006

OLYMPUS LOCK, INC.
The cabinet lock innovators.

Olympus Lock, Inc.
18424 Highway 99
Lynnwood, Washington 98037
206-362-3290 • 800-525-0954
Fax 206-362-3569

Website:
www.olympus-lock.com
Email:
Info@olympus-lock.com

PRICE LIST
Olympus Lock, Inc. *July 1, 2006*



The Original Rekeyables!

- Cabinet Locks
- Olympus Handles
- Brass Padlocks
- ShurLok Lock Box

18424 Highway 99
Lynnwood, WA • 98037
(206) 362-3290 • (800) 525-0954
FAX (206) 362-3569
Email: Info@olympus-lock.com
Web Site: www.olympus-lock.com

OLYMPUS LOCK, INC.
The cabinet lock innovators.

WHEN YOU NEED YOUR LOCKS NOW!

At Olympus, we pride ourselves on the superior delivery of our standard off-the-shelf products and custom keyed lock orders. We understand that our customers need products quickly in order to meet their customer's requirements. We have been, and always will be the "quick ship" cabinet lock company.



18424 Highway 99 • Lynnwood, WA 98037
206-362-3290 • 800-525-0954
Fax 206-362-3569

www.olympus-lock.com
info@olympus-lock.com

In This Issue

New literature now available

When you need locks now.

Product Spotlight:
729R Ratchet Lock
ETS-PL Series Pulls

Other Information

Product Spotlight: 729R SFIC Ratchet Lock

NEW! 729R SERIES!

SLIDING DOOR RATCHET LOCK FOR SMALL FORMAT IC CORES



729R

Accepts 6 or 7 pin Best, Arrow, Falcon or equivalent SFIC cores.

729R

Small format interchangeable core ratchet lock for bypassing sliding doors. Includes true ratcheting functionality.

729R Dimensions

General features:

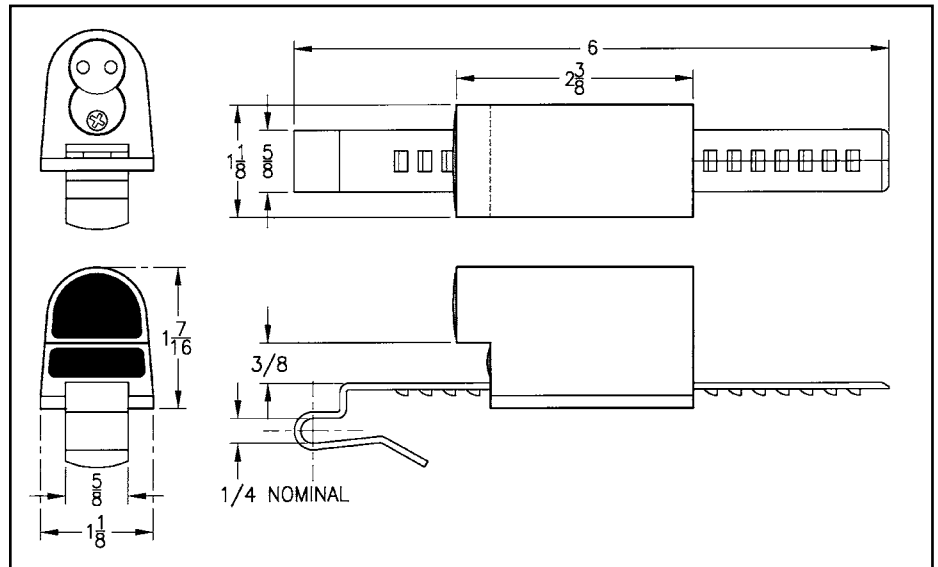
- Retrofits: Best 3S Series
- Cores: Accepts Best, Arrow, Falcon, KSP Schlage SFIC or equivalent small format interchangeable cores
- Finish: 26D (brushed chrome)
- Packed: 10 per box

Includes:

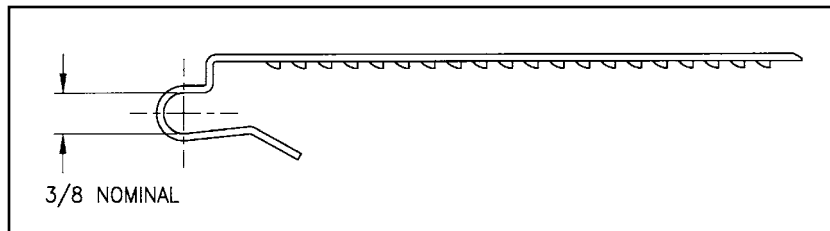
- 729RS-1 strap for 3/16" to 1/4" material thickness
- 725-PA plastic actuator

Optional strap:

- 729RS-2 strap for 3/8" material thickness



729RS-2 Optional Strap

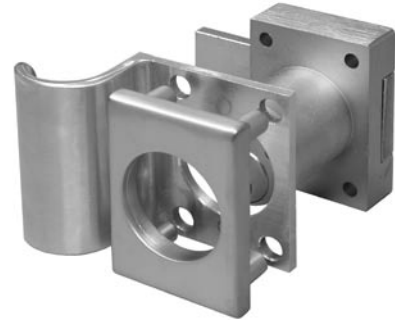


Product Spotlight: ETS-PL Series Cabinet Pulls

NEW! ETS-PL SERIES CABINET PULL! **FOR USE WITH OLYMPUS SQUARE BACK LARGE OR SMALL PIN LOCKS**

ETS1-PL Series

- The ETS1-PL cabinet pull fits between our ETS1 reinforcing trim spacer and the face of the cabinet.
- When combined with the ETS1 external trim spacer, it provides through-bolt mounting of the cabinet lock and pull in a single unit.
- The same pull works for both door or drawer applications.
- If mounted in the “pull down” position in drawer applications, the pull will protect the face of the cabinet from the wear and tear of hanging keys.
- The pull works with our existing ETS1 hardware and screws.
- This product is available in 26D or US3 finish.
- Use with our 1-1/8” diameter lock nos.: 700, 721, 754, 777, 800, 850, 854, 888, 950



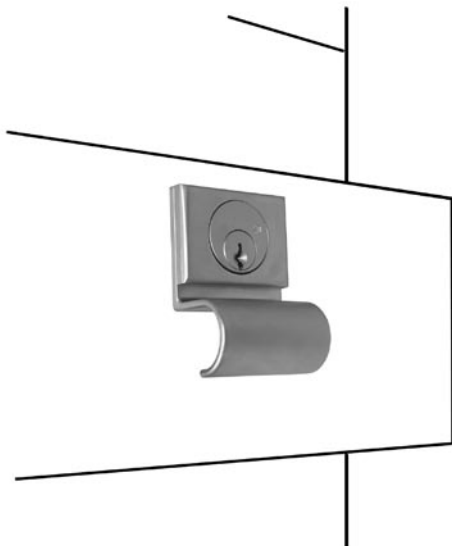
ETS1-PL
For Large Pin Locks

ETS2-PL Series

- The ETS2-PL cabinet pull is mounted on the face of the cabinet and provides through-bolt mounting of the cabinet lock and pull in a single unit.
- Does not require use of ETS2 reinforcing trim spacer.
- The same pull works for both door or drawer applications.
- If mounted in the “pull down” position in drawer applications, the pull will protect the face of the cabinet from the wear and tear of hanging keys.
- The pull works with our existing ETST2 trim spacer template.
- It is recommended that you use the ETST2 trim spacer for proper placement of mounting holes before drilling.
- This product is available in 26D or US3 finish.
- Use with our 7/8” diameter lock nos.: 100, 200, 500, 600



ETS2-PL
For Small Pin Locks



TOLL-FREE 800-525-0954

OLYMPUS
LOCK, INC.

Other Information



Meet Adam

Adam is the newest member of our Olympus Team and brings with him an excellent track record of inside sales, customer service and account management experience. Adam has previous experience in construction and hardware related products and will be answering product and sales related questions, entering sales orders, and providing general customer service.

Olympus Lock, Inc.
PO Box 1277
Lynnwood, WA 98046

Current Literature

Contact your Olympus Lock representative or call Olympus directly at 800-525-0954 for the most recent version of our catalogs and price list.

Full line catalog: July, 2006 (new!)

Condensed catalog: July 2006 (new!)

Price list: July 1, 2006 (new!)