

# Newsletter

*We are your cabinet lock innovators.*

## OLYMPUS LOCK PRODUCTS

Olympus Lock offers the widest selection of pin-tumbler cabinet locks and cabinet lock bodies of any cabinet lock manufacturer. We manufacture only high-quality, pin-tumbler locks for institutional applications, such as schools, banks, hospitals, casinos, etc. or for any application where cabinet security and key control are desired.

## HOW TO ORDER OLYMPUS CABINET LOCKS

**Ordering locks:** Olympus needs certain information about the locks you are ordering to correctly fill your order. For most of our locks you will need to indicate:

- barrel length
- finish
- required keying: KA, KD or **(MK)**

**Indicate required keying:** Our stock keyed alike numbers for each keyway are listed below.

**National D4291 keyway stock KA#s =**  
101, 103, 107, 915

**CCL R1 keyway stock KA#s =** 4T2, 4T3

**Schlage C keyway stock KA#s =** 101, 102

**Keyed different =** KD

**Ordering master keyed or non-stock custom keyed locks:** Master keyed or custom keyed locks require detailed information as to the nature of the keying. The more information the better!

As a standard, we key all National keyway master keyed locks to a GM2 5-pin system, if you require 4-pin master keyed locks, please indicate GM1 or (4-pin) on your order. All master keyed orders ship standard with 2 master keys.

Large keyed alike/master keyed and/or grand master keyed jobs which include 10 or more KA/MK groups must have a key schedule submitted in written form, and reference a "job name" and "job location." It is critical that we have a "job name" and "job location" so that we can file a record of your job for future reference in case you need to order replacement locks or add additional groups to your job.

Please indicate on your custom keyed lock order if the locks are for a "new" or "existing job." For existing jobs, we will refer to your "job record" and original lock schedule(s) so that we can correctly key your order.

## CUSTOM KEYING SERVICES

Olympus Lock offers custom keying services for your special cabinet lock keying needs. We inventory a huge supply of master keyed locks on our most popular keyways so that we can quickly fulfill your custom keyed order. We pride ourselves on being able to ship your master keyed order faster than anyone else in the industry. If you have other special keying needs such as grand master keying or non-stock master keyed systems we will be glad to accommodate you. Please give our customer service department a call at 800-525-0954 to see how we can help you.



18424 Highway 99 • Lynnwood, WA 98037  
206-362-3290 • 800-525-0954  
Fax 206-362-3569

[www.olympus-lock.com](http://www.olympus-lock.com)  
[info@olympus-lock.com](mailto:info@olympus-lock.com)

**In This Issue**

How to Order  
Olympus Cabinet  
Locks

Custom Keying  
Services

Product Spotlight:  
Rekeying the 820SC,  
725 Series IC Core

Other Information

# Product Spotlight: Rekeying the 820 Series Cam Lock

## REKEYING THE OLYMPUS 820SC CAM LOCK IS AS EASY AS 1, 2, 3!

### 820SC / 820LC

Cam lock with Schlage "C" keyway or less cylinder to accept Schlage compatible key-in-knob cylinders. 26D or US3 finish.

**820SC:** KD, KA #101, #102, master keyed

**820LC:** Less cylinder



**820SC**



**820LC**

### Step 1

Remove the cam assembly and set screws from back of lock.



### Step 2

Remove the back end of the lock body and pull out cylinder. Rekey cylinder.



### Step 3

Reassemble cylinder and cylinder driver into lock body and replace back of lock. Secure back of lock into place with set screws.



#### General features:

- Cylinder diameter: 1-1/8"
- Across flats: 7/8"
- Fits max. material thickness: 1-3/8"
- Zinc die cast lock body
- Includes parts for both lost and direct motion functions
- 26D or US3 finish
- Packed 10 per box

#### Optional cams:

- 720-3-3 long offset cam for inverted function
- 720-3-4 extra long 3" straight vertical cam
- 720-3-5 long shallow offset cam for inverted function

#### Optional trim collars:

- TR201 - 1/8"
- TR202 - 1/4"
- TR203 - 3/8"
- TR200A - Pkg. (contains all three trim collars)

# Product Spotlight: 725 Series SFIC Cabinet Locks

## LOOKING FOR AN IC CORE LOCK?

Olympus Lock's 725 Series IC core lock may be the right choice. This lock retrofits the BEST 5L Series and is available in a variety of configurations:

- Mortise or Surface Mount
- Latch or Deadbolt
- Door (left or right hand)
- Drawer (vertical or inverted)
- Key retaining drawer deadbolt function available

Accepts 6 or 7 pin Best, Arrow, Falcon or equivalent SFIC cores.

Unlike BEST, Olympus offers our lock in a dedicated door function. BEST originals require you to mount the lock on its side!



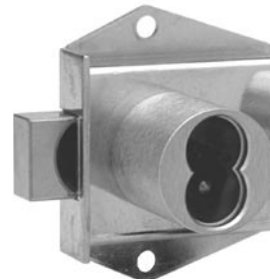
**725RD**  
Rim Deadbolt, Left Hand



**725RL**  
Rim Latch, Vertical



**725ML**  
Mortise Latch, Inverted



**725MD**  
Mortise Deadbolt, Right Hand

# Other Information



## **Meet Anjini and Kate!**

Anjini has been Olympus Lock's receptionist since January, 2005. Her voice is the first voice you hear when you call Olympus. Kate has been working part-time for Olympus for six months and has just moved into a full-time position. Kate will be doing back-up reception, fulfilling literature requests, and miscellaneous office administration.

## **Current Literature**

Contact your Olympus Lock representative or call Olympus directly at 800-525-0954 for the most recent version of our catalogs and price list.

**Full line catalog:** July, 2005

**Condensed catalog:** September, 2005

**Price list:** July 1, 2005

Olympus Lock, Inc.  
PO Box 1277  
Lynnwood, WA 98046