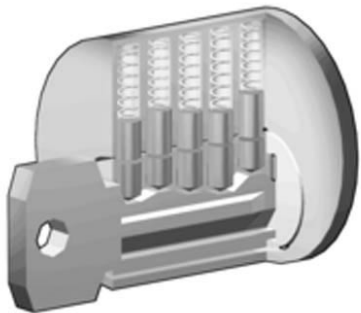


# Newsletter

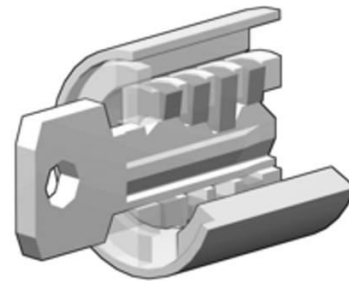
*We are your cabinet lock innovators.*

## Pin Tumbler vs. Disc Tumbler

Olympus Lock offers the widest selection of pin-tumbler cabinet locks and cabinet lock bodies of any cabinet lock manufacturer. We manufacture only high-quality, pin-tumbler locks for institutional applications, such as schools, banks, hospitals, casinos, etc. or for any application where cabinet security and key control are desired.



**Pin tumbler locks:** The keying method used most often on door locks, and in many padlocks, is the pin tumbler lock. This type was invented in the 1860s by Linus Yale, Jr., and is still used widely all over the world. Door locks on automobiles and most high-security locks have pin tumblers. The pin tumbler lock provides extensive quantities of possible combinations and is readily master keyed. Most pin tumbler locks provide more than **2000+ key combinations** for keyed different/master keyed locks. A pin tumbler locking mechanism is more secure and not as easy to pick.



**Wafer, or disc tumbler, locks:** These locks came into popular use in the late 1940s. This method of keying requires flat tumblers stamped out of sheet brass. The tumblers are usually incorporated into a die metal cylinder, which results in low-cost manufacture. Wafer tumbler locks are used extensively in desks, cabinets, padlocks, and in some door locks. The possible combinations available in this type are comparatively few especially if master keying is required. There are typically **80 possible key combinations** for a keyed different/master keyed disk tumbler. Wafer tumbler locks tend to be relatively easy to pick.

## Custom Keying Services

Olympus Lock offers custom keying services for your special cabinet lock keying needs. We inventory a huge supply of master keyed locks on our most popular keyways so that we can quickly fulfill your custom keyed order. We pride ourselves on being able to ship your master keyed order faster than anyone else in the industry. If you have other special keying needs such as grand master keying or non-stock master keyed systems we will be glad to accommodate you. Please give our customer service department a call at 800-525-0954 to see how we can help you.



18424 Highway 99 • Lynnwood, WA 98037  
206-362-3290 • 800-525-0954  
Fax 206-362-3569

[www.olympus-lock.com](http://www.olympus-lock.com)  
[info@olympus-lock.com](mailto:info@olympus-lock.com)

**In This Issue**

Pin vs. Disc Tumbler Locks

Custom Keying Services

Product Spotlight:  
New Products  
720, 820, 920  
TR201, TR202, TR203

Other Information

# Product Spotlight: Large Pin Cam Locks

## The Olympus Family of Large Pin Cam Locks

Why maintain a separate key system for just your cabinet door and drawers when you can key your cabinet system into your existing door hardware system with these innovative products from Olympus Lock?



### 720LM/DM

Cam lock for Best-style, small format IC cores. Accepts Best, Arrow, Falcon, KSP or equivalent SFIC cores. 26D or US3 finish.

#### List Price

Less core: **\$32.00 ea.**



### 920LM/DM

Cam lock for Schlage-style large format IC cores including Schlage, Keymark, and Mul-T-Lock. Accepts Schlage classic or Primus/Everest cores. 26D or US3 finish.

#### List Price

Less core: **\$37.00 ea.**



### 820SC / 820SC-LC

Cam lock with Schlage "C" keyway or less cylinder to accept Schlage compatible key-in-knob cylinders. 26D or US3 finish.

#### List Price

KD, KA #101, #102: **\$43.40 ea.**

Master Keyed: **\$48.40 ea.**

Less Cylinder: **\$37.00 ea.**

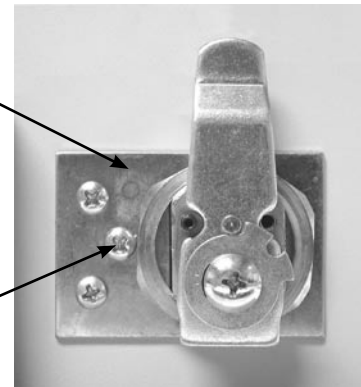
### 720-PL3

All large pin cam locks ship standard with 720-PL3 anti-rotation plate.



Anti-rotation plate keeps lock from rotating in mounting hole.

Placing a screw in the center hole traps the fixing nut in place.



TOLL-FREE 800-525-0954

**OLYMPUS**  
LOCK, INC.

# Product Spotlight: Large Pin Cam Locks

## General features:

- Cylinder diameter: 1-1/8"
- Across flats: 7/8"
- Fits maximum material thickness: 1-3/8"
- Zinc die cast lock body
- Includes parts for both lost and direct motion functions
- 26D or US3 finish
- Packed 10 per box

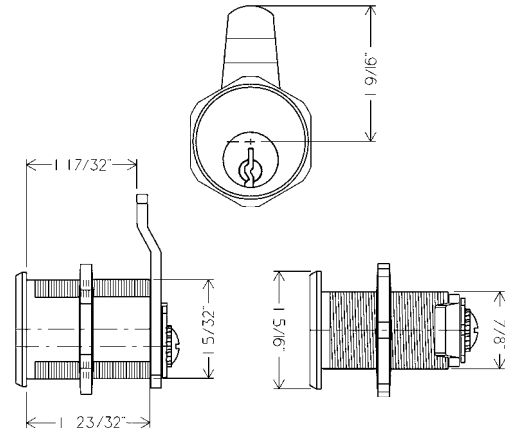
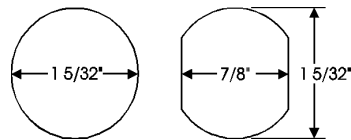
## Optional cams:

- 720-3-3 long offset cam for inverted function
- 720-3-4 extra long 3" straight vertical cam
- 720-3-5 long shallow offset cam for inverted function

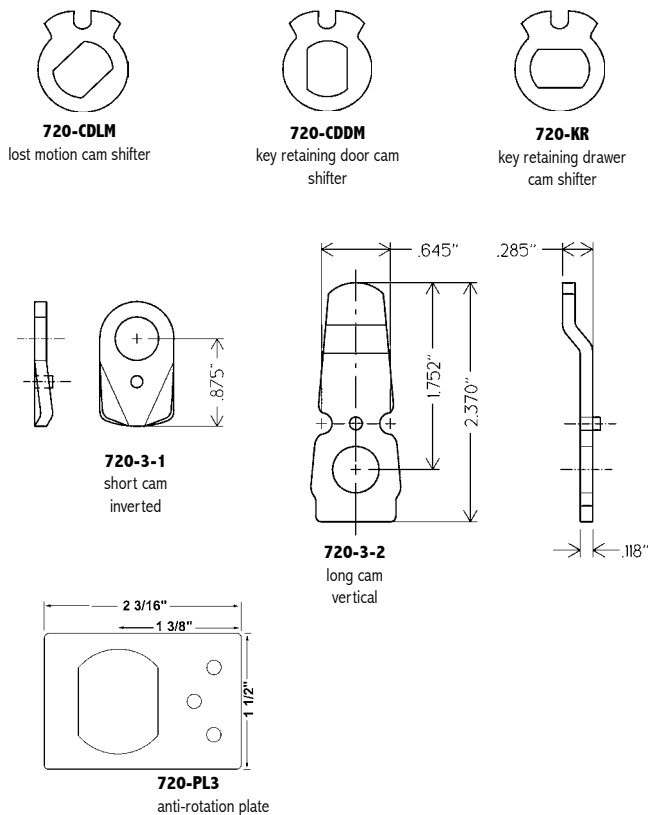
## Optional trim collars:

- TR201 - 1/8"
- TR202 - 1/4"
- TR203 - 3/8"
- TR200A - Pkg. (contains all three trim collars)

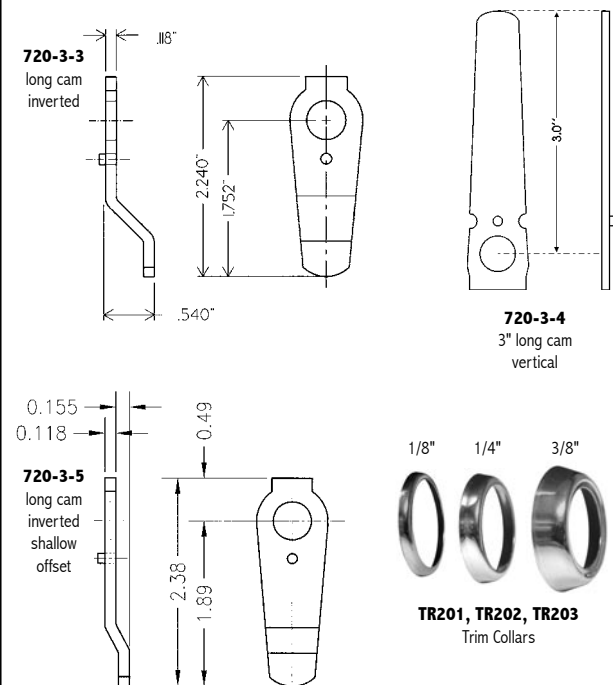
### Mounting cutout:



## Ships standard with the following accessories:



## Available separately:



TOLL-FREE 800-525-0954

**OLYMPUS**  
LOCK, INC.

# Other Information



## Meet Kirsten!

Kirsten has been with Olympus Lock for 4 years. She started out working in our keying workshop and is very familiar with our products. Kirsten moved into an administrative/inside sales position with the company in 2002. Kirsten's current position includes customer service, inside sales and order entry.

Olympus Lock, Inc.  
PO Box 1277  
Lynnwood, WA 98046

## Current Literature

Contact your Olympus Lock representative or call Olympus directly at 800-525-0954 for the most recent version of our catalogs and price list.

Current editions:

- Full line catalog: July, 2005
- Condensed catalog: September, 2005
- Price list: July 1, 2005